

8. Phone Application Settings

8.1 Download and Installation

Please scan the QR code below to download and install.



Android



iPhone

Click the icon below to enter settings.

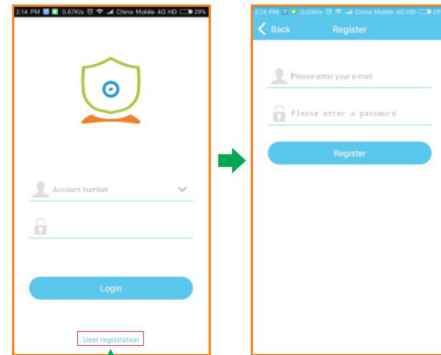


8.2 Account registration

Click the app to enter login interface as show in the right.

User name: (EMAIL)
Password: (set as you like)
After setting, please enter the code and click "Register".

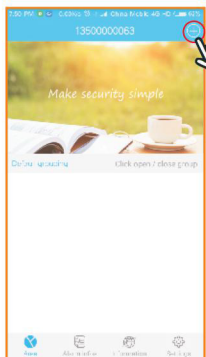
After the registration is successful, the interface will automatically jump to the login interface, and the user clicks on login.



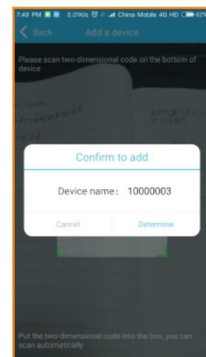
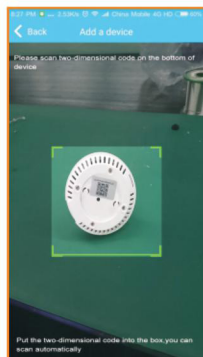
For new users, please click "user registration".

8.3 Add Panel

Click on the login interface to enter the APP main interface. Then, click on the upper right corner of the icon "⊕" to enter the add device interface to scan the QR Code of the back of panel. Scan successfully, pop-up prompt to confirm the add. Finally, click [confirm] to add the panel to the APP main interface.



APP main interface



Indoor Infrared IP Camera Installation Instruction



1. Introduction

BSC03096 IP camera apply Linux operation system and Hisilicon chip 3518EV200. The device is efficiency and small with high stability and reliability. It can be programmed via IE browser, ONVIF PC clients, CMS clients, phone application, mainly used for home, office, warehouse, shop, school and so on.

2. Parameters

Operation system: Embedded Linux

User interface: IE browser, CMS PC client, phone application

Video format: mainstream 720P/D1 25fps
Sub-stream D1/CIF 25fps

Network interface: 10M/100M adaptive network interface

Storage interface: TF card, support max 128G (1st time, please format TF card on IE browser interface). Use a hex screwdriver to open the cover to see the TF card slot.

Image sensor: Crystal phase H62, 100W (1280*720)

Power: DC 12V --- 1A

3. Network connection

3.1 Cable network

Connect the power line first, and use the network interface to connect the same router with the computer.

3.2 WiFi network


After connecting cable network, log in IE browser to set WiFi. Once finished, disconnect the cable network.

Notice: keep IP camera and computer in the same segment of IP address.

4. Camera Settings


The IP address of the camera is automatically assigned by the router. Users can obtain the IP address as follows:

- Obtain "intranet search tool" for search at the seller;
- Log in to the mobile phone APP. (APP download details see "8.Phone Application Settings")
Log in to the IP address on the web page, as shown in the following figure.

 <http://192.168.1.52/>



After logging in, the web page displays the download page and downloads as prompted.

After download, right click the icon  to run it as a administrator, Follow the popup prompts to install.

Notice: before installing the ActiveX, close all IE browsers.

After the software is installed, re-log in the device's IP address on the web page and enter the login page.

As shown in Fig. 1, enter "admin" at the user name, select "English" for the language option, and click "OK" to enter the main interface. Fig. 2.

Reminder: When the device is shipped from the factory, the user name is admin, and the password is empty. Users can directly log in to the main menu. In order to consider the security of the operation of the device, the administrator is required to enter the "user management" item on the "System Settings" page of the system to modify the password of this device.



Fig.1

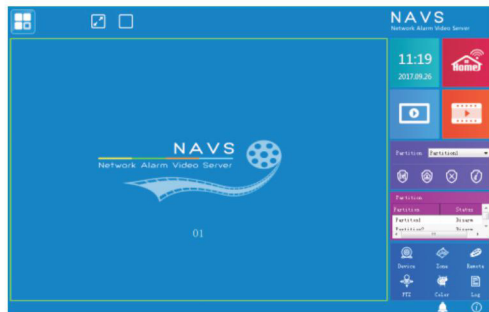


Fig.2

5. Set WiFi in IE interface

After entering IE main interface, click icon  set network "Basic setting" – "Set WiFi" .

as shown in Figure 3. Encryption method is "AUTO", check "2G enable" (as shown in the figure on the right) ssid and password are WiFi name and WiFi password respectively. After setting, click "Save", "Update", pop-up window prompts "Parameter setting is successful" , Wait 5 seconds to disconnect the network cable.

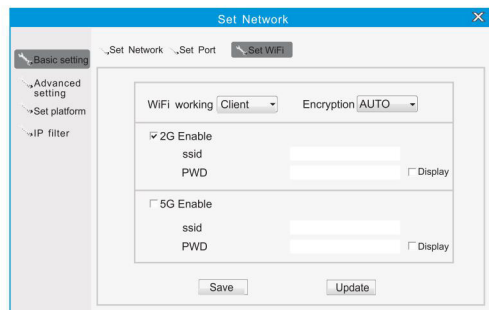


Fig.3


6. Video viewing and recording


► **Video view:** Right-click on the video display area and the setup item appears. As shown in Fig. 4, the main stream is the video stream of the device. The substream is set to save the traffic during network transmission.

Condition selection stream opens the video for viewing.

► **Manual recording:** After opening the video, right-click to select "Start Recording" to start recording, and right-click "Stop Recording" to end the recording.

► **Timed recording/alarm recording:**

Click on the main menu icon  to select "video setting" - "record schedule". The user will set according to the actual situation. The alarm recording will only be recorded if the alarm is triggered within the set time period.

► **Motion Detection:** Click on the main menu icon  to select "Alarm Settings" - "Device Alarm Settings" - "Motion Detection". When there is a change in the screen, if someone walks past and the lens is moved, the system will automatically record according to the settings.

Tips: a. If a scheduled recording is set in the time period, manual recording will not work during this period of time.

b. The default recording is stored in the D drive of the computer. When recording manually, the folder where the video is recorded will be prompted.

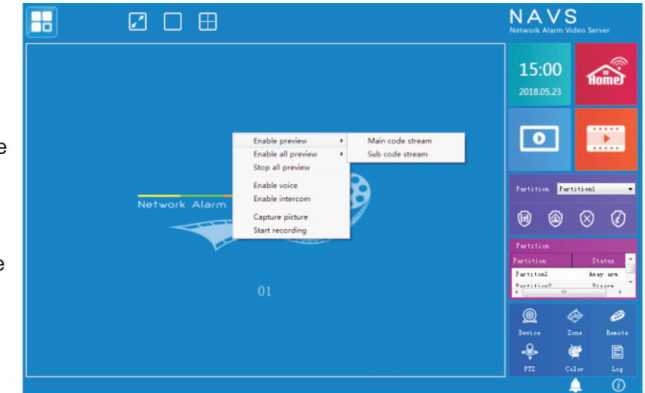


Fig.4

7.TF card insertion

Follow these steps to insert a TF card:

