

# Wireless 2-Way Slim Keypad



**UK**  
Tel: +44-(0)-161-655-5500  
technical@riscogroup.co.uk

**U.S.A**  
Tel: +1-631-719-4400  
support-usa@riscogroup.com

**ITALY**  
Tel: +39-02-66590054  
support@riscogroup.it

**SPAIN**  
Tel: +34-91-490-2133  
support-es@riscogroup.com

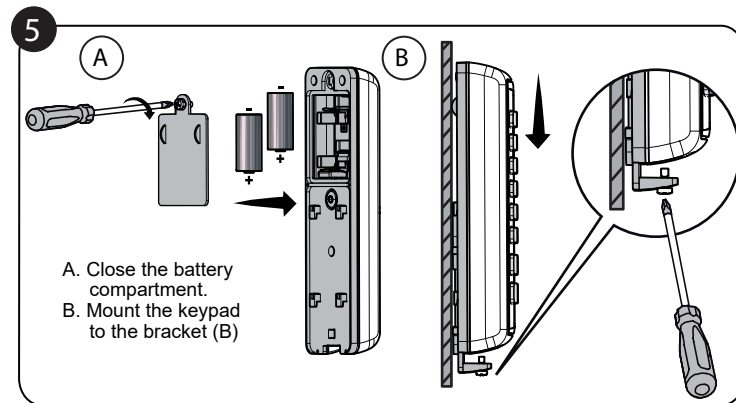
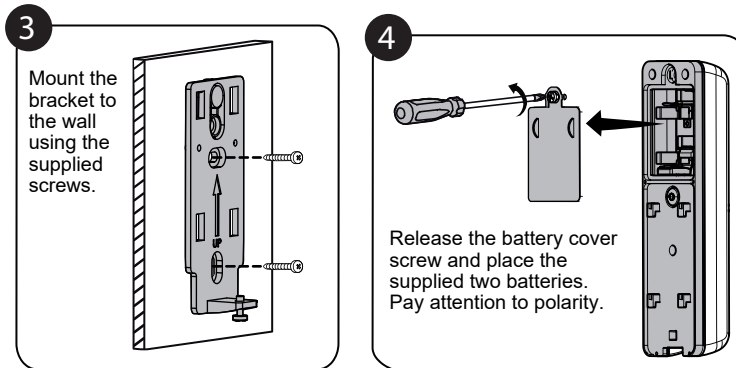
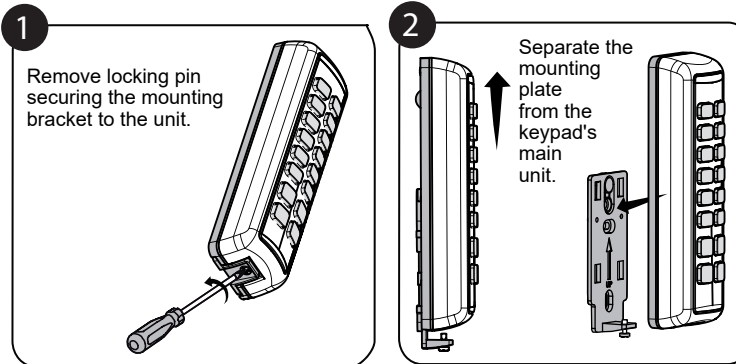
**CHINA (Shanghai)**  
Tel: +86-21-52-39-0066  
support-cn@riscogroup.com

**FRANCE**  
Tel: +33-164-73-28-50  
support-fr@riscogroup.com

**BELGIUM**  
Tel: +32-2522-7622  
support-be@riscogroup.com

**ISRAEL**  
Tel: +972-3-963-7777  
support@riscogroup.com

Rehov Hahoma 14  
Rishon Lezion, Israel



## Introduction

The Wireless 2-Way Slim Keypad empowered with a proximity reader comes in two models:

- RW132KL1P — a black protection-insulated outdoor model
- RW132KL2P — a white indoor model

The keypad operates in either of two modes:

- Full function Mode: Wireless LED operating keypad
- Bypass unit Mode: Used to activate an entry countdown period

Being bi-directional the 2-Way keypad receives a reply status indication from the panel for each command that it has sent to the panel.

To use functions of the keypad you can use a proximity tag or a code.

## Main Features

- Bi-directional wireless communication
- Up to three wireless keypads per system
- Power-save light sensor
- Proximity tag operation
- Wall tamper protection
- Battery economy mode
- Wireless doorbell function
- 2 operation modes
- Outdoor-certified IP65 (RW132KL1P only)

## Communication setup

The 2-Way Slim Outdoor Keypad must identify itself to the system receiver. This can be done by entering the 11-digit serial number of the keypad into the system or using RF mode.

### To setup the communication:

1. Set the system to Learn Mode by RF or by Code.
2. Send an allocation message \*.
  - **By RF communication:** Send a Write message by pressing both keys simultaneously for at least 2 seconds.
  - **By Code:** Enter the keypad's 11 digit serial code number
3. The system automatically recognizes the device and allocates it the next available index number. The system will announce the keypad device type and the place it has been allocated to.
4. If required to change the keypad's default settings, configure the keypad's parameters according to the system installation manual.

- \* Notes:
- Before mounting the keypad, test the keypad communication with the system.
  - Adding the keypad to the system can be done remotely using the Configuration Software.

## Buzzer Indication:

Duration	Operation
Long beep	Confirmation
3 short beeps	Wrong code
Pulsed beeps	Exit/Entry beeps (programmable)
Short beep	Each key press

## Models: RW132KL1P; RW132KL2P

### RED Compliance Statement:

Hereby, RISCO Group declares that this equipment is in compliance with the essential requirements and other relevant provisions of Directive 2014/53/EU. For the CE Declaration of Conformity please refer to our website: www.riscogroup.com

- EN50131-1, EN50131-3, Grade 2
- EN50130-5, Environmental class IV (RW132KL1P), Environmental class II (RW132KL2P)
- EN50131-6, Type C

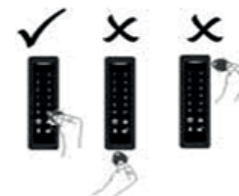


Blue Red Green

LED Indicator		
Color	State	Status
Blue	Blink	During communication with the panel
Red	On	System fully or partially armed
	Slow flash	During Exit delay
Green	Rapid flash	During Alarm
	Blink	Trouble indication in the system while the system is unset*
Green/Red	Toggle	Waiting for code to be entered.

## USING THE PROXIMITY TAG

The proximity tag, is correctly used by applying it within a 2 cm (two centimeter) distance from the #? key as shown at right (after waking the keypad by pressing the appropriate key).



**Note:** At the completion of Communication setup, it is required to initiate transmission of the wireless keypad in order to update the keypad with the new proximity tag.






## Full-Function Mode

### User Operations






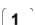
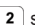

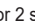




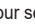

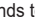

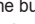


The following list details the user operations from the 2-way wireless slim keypad in a full functional mode. User operation can be defined to be activated by a quick mode or high security mode that requires the use of a code or proximity tag. In the high security mode the proximity tag can be used as a substitute for inserting a user code when prompted to insert a code.

\* Note: When using the proximity tag, the keypad needs to be woken up before operation (see *Using the Proximity Tag* text)


### Common Operations:

Operation	Quick	High Security Mode <sup>1</sup>
Set (Full) (Away Arm)	Press 	Press  > Code <sup>2</sup>
Set (Partial) (Stay Arm) <sup>3</sup>	Press 	Press  > Code <sup>2</sup>
Unset (Full Disarm)	1. Press  > Code or 2. proximity tag (after wake up)	

### Advanced Operations:

Operation	Quick	High Security Mode <sup>1</sup>
Partition 1/2/3 setting (Away)	Select partition 1/2/3 and press 	Select partition 1/2/3 and press  followed by Code <sup>2</sup>
Stay arm partition 1/2/3	Select partition 1/2/3 and press 	Select partition 1/2/3 and press  followed by Code <sup>2</sup>
Partition Disarm	Select partition 1/2/3 and press  followed by Code <sup>2</sup>	
Panic alarm	Press buttons  +  simultaneously for 2 seconds	
Fire alarm	Press buttons  +  simultaneously for 2 seconds	
Emergency/Med. alarm	Press buttons  +  simultaneously for 2 seconds	
System Chime On/Off <sup>6</sup>	Press the button  for 2 seconds	
Main unit speaker volume <sup>6</sup>	Press the button  for 2 seconds. Select the volume level (0=No sound, 4= full volume) Press  to save your selection	
Set keypad exit/entry beeps <sup>6</sup>	Press the button  for 2 seconds to toggle between On/Off	
Activate/Deactivate light sensor <sup>4</sup>	Press the button  for 2 seconds to toggle between On/Off	
Status request	Press the button  for 2 seconds for system status message <sup>6</sup> and view LED display	Press the button  for 2 seconds followed by code <sup>2</sup> for system status message <sup>6</sup> and view LED display
Outputs Control	Press 1/2/3 for 2 seconds	Press 1/2/3 for 2 seconds followed by code <sup>2</sup>
Ring local door bell <sup>5, 6</sup>	Press the button  to activate a door bell sound on the main system.	
Wake up keypad	Press 	

Notes:

1. Consult your installer for the operations defined with a code.
2. The proximity tag can be used instead of code.
3. For Part Setting (Stay Arming) with no entry delay press the  key for two seconds.
4. Light sensor is used to save battery by turning on/off the keypad backlight.
5. Needs to be defined by your installer
6. Not applicable to LightSYS

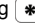
### Bypass Unit mode (Not applicable to LightSYS)

For units configured by installers as being in bypass mode, the actions keys are disabled and the keypad is used only to authorize an opening of an exit/entry door. The following explanation details the user operations from the 2-way wireless slim outdoor keypad in bypass unit mode.<sup>a</sup>

### User Operation

When the system is armed, a user must get access using the keypad to open the door. Opening a door without an approval from the main unit will cause an immediate intruder alarm.

### Granted Access to Open Entry Door

1. Before opening an entry door enter an authorized code<sup>b</sup> in the keypad or wake up the keypad by pressing  and present a proximity tag<sup>c</sup>.
2. Once access is granted (Green Led On) the user has a time window<sup>d</sup> to open the front door.
3. Once the front door is opened entry time will start in which the security system needs to be disarmed.

Notes:

- a. Activating the RF Wake-up mode can measurably impact on battery life. Consult your installer.
- b. Bypass code can be unique or the same code as the security code. Ask your installer for the code definition.
- c. An incorrect keypad code entered five times locks it for one minute.
- d. Ask your installer for the defined time window.

## Replacing Batteries


1. Remove the unit from the wall<sup>1</sup>.
2. Remove the battery compartment cover screw located at the bottom of the cover by turning screw counter clockwise.
3. Pull up the battery compartment cover.
4. Pull out the batteries and replace them with new ones. Pay attention to the polarity when inserting the new batteries.
5. Close the case and secure the screw to its place.

Note:

1. A tamper alarm may result. Inform your alarm company before replacing batteries

**CAUTION:** Risk of explosion if battery is replaced by an incorrect type. Dispose of used batteries according to local regulations.

## Changing Keypad Parameters

Any change performed in the definition of the keypad parameters requires updating the keypad as well. This is performed by pressing the  key for 2 seconds. Doing so, the panel will send an update to the keypad.

## Technical Specification:

Electrical	
Battery Type	CR123, 3V lithium battery (x 2)
Power Output	10mW
Current Consumption	Stand-by current 10µA, Max current 100 mA
Frequency	868.65 MHz, 433.92 MHz (model dependant)
Modulation Type	00K
Typical Battery Life	3 Years
Physical	
Dimensions (HXWXD)	100 mm X 45 mm X 25 mm (3.9 i X 1.8 X .98 inches)
Weight (incl batteries)	0.157 kg
Environmental:	
RF Immunity	According to EN50130-4
Operating temperature	-40° C to 70° C (-40° F to 159° F)
Storage temperature	-40° C to 70° C (-40° F to 159° F)
IP Rating	65 (RW132KL1P model only)

## RISCO Group Limited Warranty

RISCO Group and its subsidiaries and affiliates ("Seller") warrants its products to be free from defects in materials and workmanship under normal use for 24 months from the date of production. Because Seller does not install or connect the product and because the product may be used in conjunction with products not manufactured by the Seller, Seller cannot guarantee the performance of the security system which uses this product. Seller's obligation and liability under this warranty is expressly limited to repairing and replacing, at Seller's option, within a reasonable time after the date of delivery, any product not meeting the specifications. Seller makes no other warranty, expressed or implied, and makes no warranty of merchantability or of fitness for any particular purpose. In no case shall seller be liable for any consequential or incidental damages for breach of this or any other warranty, expressed or implied, or upon any other basis of liability whatsoever. Seller's obligation under this warranty shall not include any transportation charges or costs of installation or any liability for direct, indirect, or consequential damages or delay. Seller does not represent that its product may not be compromised or circumvented; that the product will prevent any personal injury or property loss by burglary, robbery, fire or otherwise; or that the product will in all cases provide adequate warning or protection. Buyer understands that a properly installed and maintained alarm may only reduce the risk of burglary, robbery or fire without warning, but is not insurance or a guaranty that such event will not occur or that there will be no personal injury or property loss as a result thereof. Consequently seller shall have no liability for any personal injury, property damage or loss based on a claim that the product fails to give warning. However, if seller is held liable, whether directly or indirectly, for any loss or damage arising under this limited warranty or otherwise, regardless of cause or origin, seller's maximum liability shall not exceed the purchase price of the product. Which shall be complete and exclusive remedy against seller. No employee or representative of Seller is authorized to change this warranty in any way or grant any other warranty.

**WARNING:** This product should be tested at least once a week.

**CAUTION:** risk of explosion if battery is replaced by an incorrect type.

Dispose of used batteries according to local regulations.