

# **ZKBioSecurity**

"All-in-One" Web-Based Biometric Security Management Platform



## "All-in-One" Web-Based Biometric Security Management Platform

**Personnel****Access****Attendance****Consumption****Elevator****Hotel****Visitor****Parking****Patrol****Video**

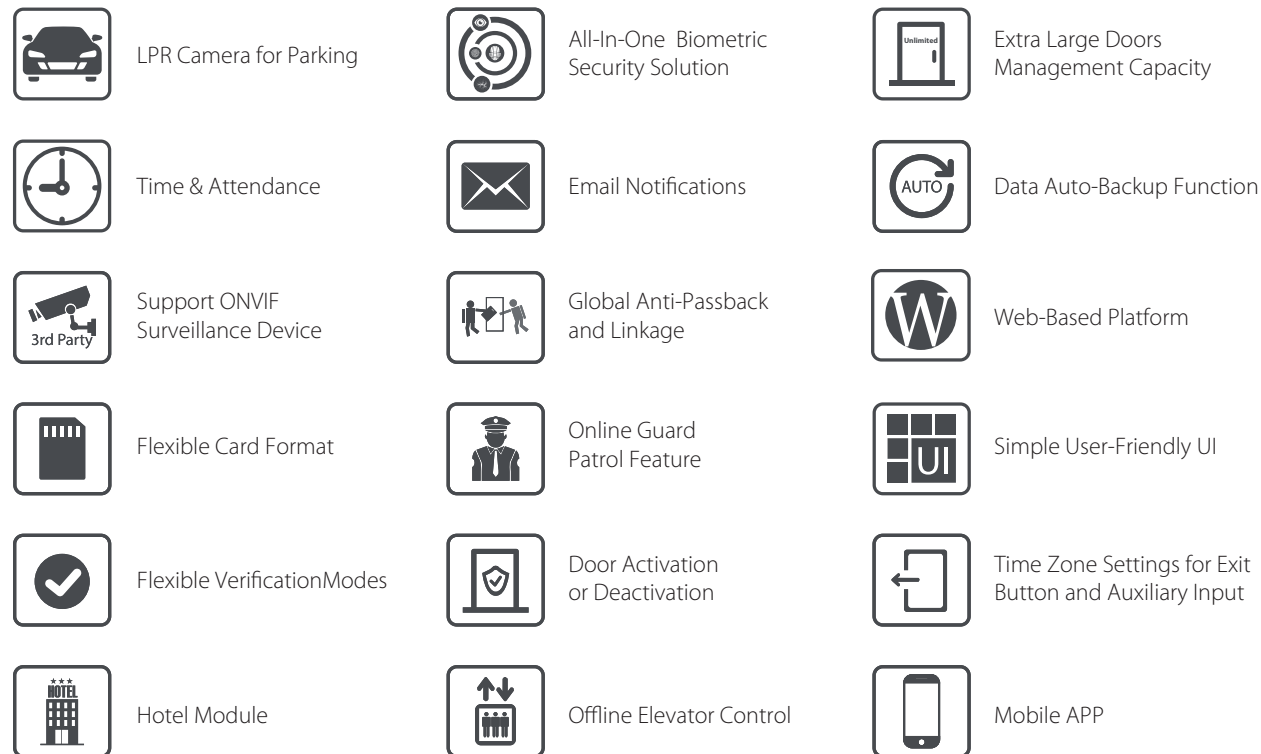
ZKBioSecurity is the ultimate "All-in-One" web based security platform developed by ZKTeco. It contains multiple integrated modules: access control, elevator control (online/ offline), visitor management, guard patrol, hotel module, T&A, consumption, parking and video linkage. With an optimized system architecture designed for high level biometric identification and a modern user-friendly GUI, ZKBioSecurity provides the most advanced solution for a whole new user experience.

**Latest Compatible Software Version: ZKBioSecurity 3.2.0.0**

Demo Link: [http://110.80.38.74:6066/base\\_index.action](http://110.80.38.74:6066/base_index.action)

User Name: admin / Password: admin

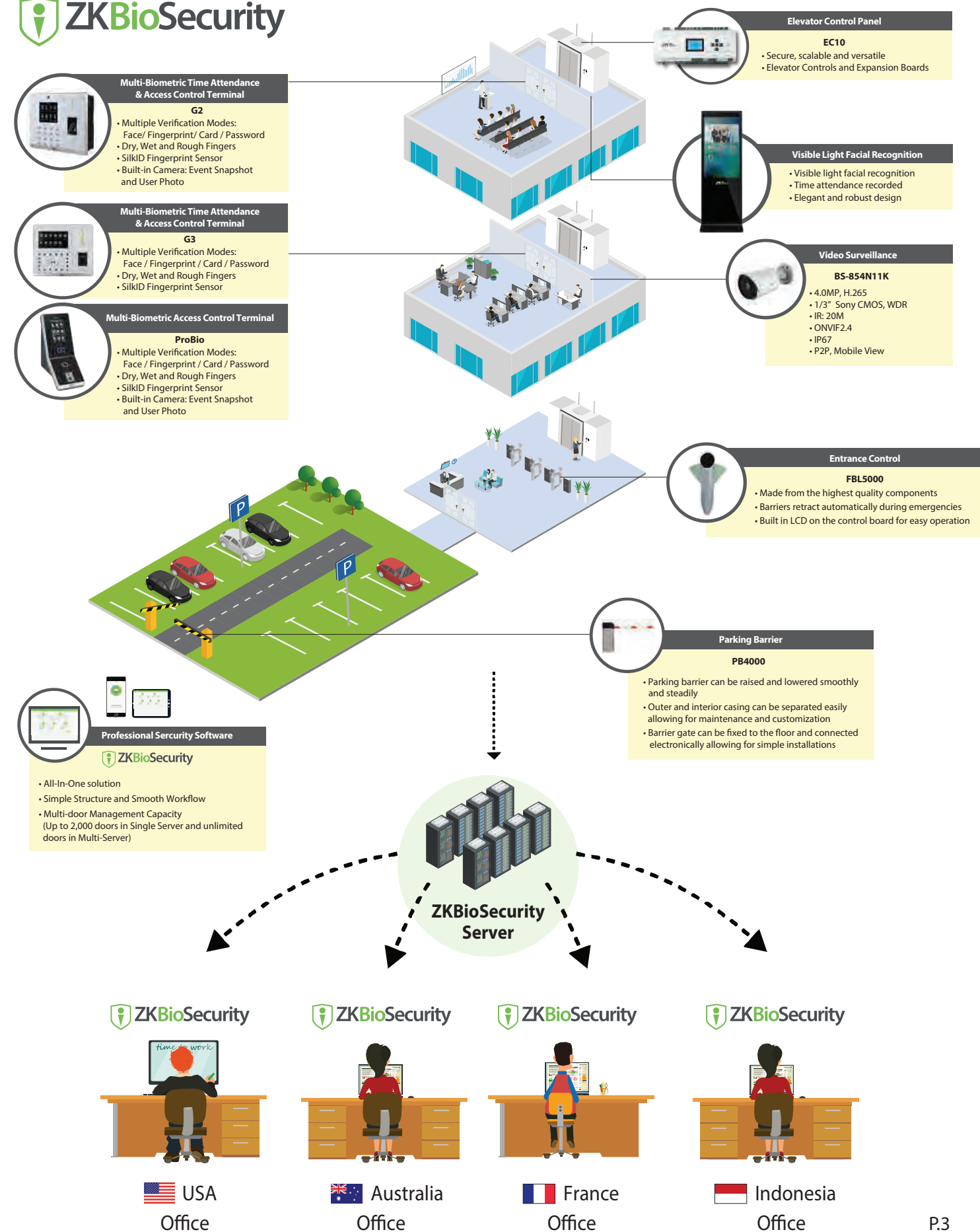
## Features:



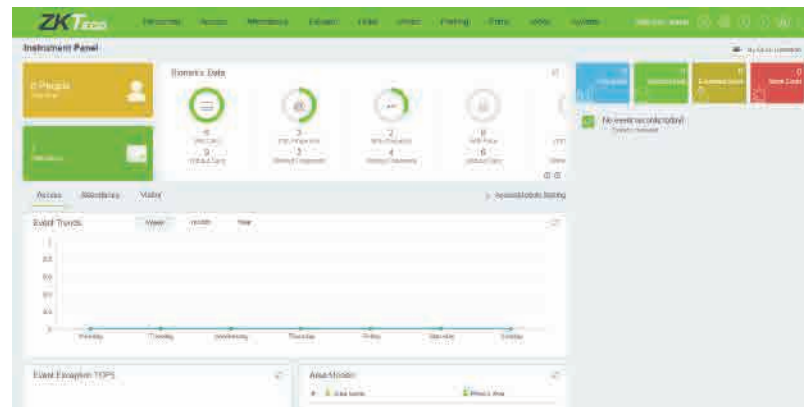
- Global Scale All-in-One Web-Based Security Platform.
- Supports thousands of doors and T&A terminals.
- Reliable and high speed industrial grade encrypted communication.
- Advanced Access Control Functions (Global Linkage, Global Anti-Passback, Global Interlock, etc...).
- Supports ZKBioHA high availability system, to ensure 24/7 continuity system operation.
- Compatible with 3rd party IPC/ NVR/ DVR via industry standard Onvif.
- Automatically scheduled Data Backup.
- Alarms and Events Notification (system monitor, email, SMS).
- Thorough and detailed system log monitoring system.
- Supports Multi-modal biometric authentication (Fingerprint, Face, Finger Vein) and various PROX card formats (EM, Mifare, HID, Desfire etc..).
- Supports Card Printing with 3rd Party card printer.
- Supports Multi-location management.
- ZKBioSecurity Mobile App supports iOS and Android platform.

## "All-in-One" Web-Based Biometric Security Management Platform

### ZKBioSecurity



## ZKBioSecurity



ZKBioSecurity is the ultimate “All-in-One” solution which offers a complete security management platform, it comes with 10 integrated modules.

- |                      |                           |                       |                       |
|----------------------|---------------------------|-----------------------|-----------------------|
| 1) Personnel         | 4) Consumption Management | 7) Visitor Management | 10) Video Linkage     |
| 2) Access Control    | 5) Elevator Control       | 8) Parking System     | 11) System Management |
| 3) Time & Attendance | 6) Hotel Management       | 9) Patrol             |                       |

### Personnel

Personnel primarily consists of two parts: Department Management settings, which is used to set the Company’s organizational chart; and Personnel Management settings, which is used to input personnel information, assign departments and sub-departments (more than 10 levels), maintain and manage personnel information and setting.

### Access Control

Access Control is a web-based management system which enables advanced access control functions, management of networked access control panel and standalone devices via computer, and unified personnel access management. The access control system sets door opening time and levels for registered users.

### Time & Attendance

As an "All in One" security platform, the ZKBioSecurity contains a web-based time attendance module. Administrators can manage the Time Attendance anywhere once they can access to the Internet. Moreover, this is an powerful Time Attendance system, which can handle most of the complicated time attendance circumstance, such as, flexible shifts, multi-level OT, cross day shift and online leave application with multi-level approval.

### Consumption Management

ZKBioSecurity consumption is a desktop-based restaurant management software module designed to offer restaurants all necessary and useful tools to speed up service and increase efficiency of operation. The customizable options offered in the system is ideal for any restaurant type including fine dining restaurants, bistros, fast food chains, cafes, bars, etc. ZKBioSsecurity consumption module helps staffs to complete their tasks efficiently in line with their operational style and business.

### Elevator

Elevator Control is designed to control the elevator access authentication, to manage access rights (using RFID card, Fingerprint, and other biometric technology) to different floors and supervise elevator events. Administration can set floor level for the registered user and interact with the access control module to achieve the one stop management purpose. Only the authorized users can access to certain floors and doors within a period of time after being authenticated.

### Hotel Management

Provides hotel service management functions covering check-in, overstay, check-out, rate settlement, and lock setup and management.

### Visitor

Visitor Module is a web-based management system that implements entry registration, exit registration, snapshot capturing, visitor quantity statistics, reservation management and shares information among registration sites. Integrated with the access control and elevator control module, it is used at the reception desks and gates to manage visitors.

### Parking Management

Automatic and intelligent vehicle management effectively and accurately monitors and manages vehicles at all exits and entrances.

### Guard Patrol

The Online Guard Patrol module is the new cost-effective way to accomplish guard patrol management. ZKBioSecurity can utilize the access control readers already in place as guard patrol check point readers. ZKBioSecurity terminals and readrs boast biometric technology for added security. No additional equipment is required for the guard to carry.

### Video

For high-level security demand, a video surveillance management platform is essential to most of the premises. ZKBioSecuirty provides a video surveillance module which supports real time video and query video records, real time video pop-up alert when linkage event occurs. Moreover, this module can integrate with 3rd party cameras through private protocol and ONVIF. This module can also interact with other ZKBioSecurity modules such as access control, visitor, patrol, parking and hotel management.

### System Management

System Management is designed to assign system users, configure the corresponding modules, manage the database, set system parameters and manage the system operation logs.



### Highlight 1: Web Based Access Control and Time attendance Software

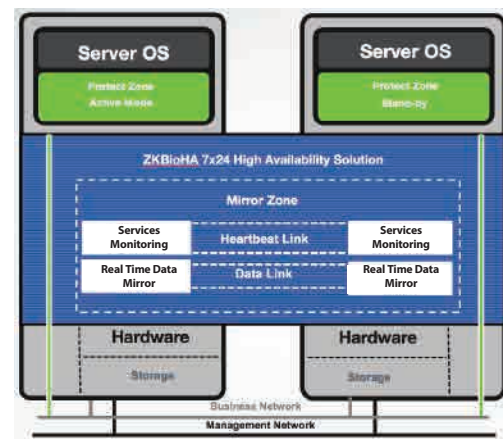
Users can access the centralized system anywhere by their web browser to remotely manage thousands of standalone terminals and controllers under wide area network (WAN).



### Highlight 2: Highly Integrated with ZKBioHA – Continuous Service Guaranteed 24/7

#### What is BioHA

ZKBioHA is a high availability solution for enterprise, it can integrate with ZKBioSecurity platform to provide professional real-time sync of business data and business continuity protection for customer. The solution supports high availability protection for different app software platforms and mainstream databases, so as to provide data and app protection for customer's kernel business system.



#### Business Continuity

ZKBioHA provides the professional real-time sync of business data and business continuity protection for the customer, which solves software/ hardware single point of failure (i.e. system upgrades, computer crash, software bugs, hacking, broken connections and cyber attacks) and realizes automatic failover in case of failure to ensure business system continuity.



Computer Crash

Software Bugs

Cyber Attacks

Broken Connections

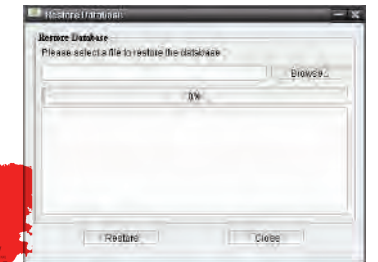
Power Failure

### Highlight 3: Backup

ZKBioSecurity has the ability to schedule an automatic backup of the database, mapped to a designated drive at a specific time.

Username	Start Time	Database Version	Backup Immediately	Backup Status
admin	2018-01-19 18:00:02	3.1.0.0		
admin	2018-01-19 18:27:10	3.1.0.0		
admin	2018-01-26 18:00:02	3.1.0.0		
admin	2018-02-02 18:00:02	3.1.0.0		
admin	2018-02-09 18:00:02	3.1.0.0		

Backup Database



Restore DataBase

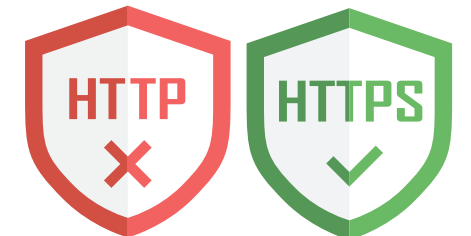
### Highlight 4: Data Cleaning

The data cleaning function is designed to optimize the ZKBioSecurity System performance by scheduling a cleanup of outdated data on designated modules or all modules.

Recent	Retains the recent	
Hotel Management Records	15	3
Parking Lot Record	10	6
Attendance Transactions	15	9
Patrol Transaction	15	12
Access Transaction	15	15
Elevator Transaction	15	18
Visitor Transaction	15	21
Video Transaction	15	24
System	15	27
System Operation Log	15	30
Device Commands	6	33
Database Backup File	6	36

### Highlight 5: HTTPS

ZKBioSecurity provides a high secure communication over a computer network, HTTPS (HTTP Secure), an adaptation of the Hypertext Transfer Protocol, which is widely used on the Internet. It means all communications between your browser and the ZKBioSecurity Client are encrypted.



### Highlight 6: Email

After the email server is setup, the system can send email notifications automatically to designated recipients. For example, if the door is opened forcefully, notification email will be sent to the administrators; if the employees have abnormal attendance records, email will be sent to the administrators.

Sender	Receiver	Subject	Submit Time	Send Time	Status	Error Message
popy.xiao@zktco.com	popy.xiao@zktco.com	abnormal attendance	2018-02-09 20:30:01	2018-02-09 20:30:01	Successful	success
popy.xiao@zktco.com	popy.xiao@zktco.com	abnormal attendance	2018-02-09 19:30:01	2018-02-09 19:30:01	Successful	success
popy.xiao@zktco.com	popy.xiao@zktco.com	abnormal attendance	2018-02-09 17:30:01	2018-02-09 17:30:01	Successful	success
popy.xiao@zktco.com	popy.xiao@zktco.com	abnormal attendance	2018-02-09 16:30:01	2018-02-09 16:30:01	Successful	success

### Highlight 7: Operation Log

The Operation Log function monitors and records the operation on the system modules. This function enables users to check who performed each operation, when it was performed, what was performed, and where it was performed. In addition, this function can help you analyze the causes of system errors or other types of problems from the record data.

Operation User	Operation Time	Operation IP	Module	Operating Object	Operation Type	Operation Content	Result
admin	2017-11-30 14:52:35	192.168.101.253	System	User	Login	Login	Success
admin	2017-11-30 14:11:21	192.168.101.253	System	User	Login	Login	Success
admin	2017-11-30 12:58:12	192.168.101.253	System	User	Logout	Logout	Success
admin	2017-11-30 12:40:27	192.168.101.253	System	User	Login	Login	Success
admin	2017-11-30 11:51:45	192.168.101.253	System	User	Login	Login	Success
admin	2017-11-30 11:51:42	192.168.101.253	System	User	Login	Login	Success
admin	2017-11-30 11:46:48	192.168.101.253	System	User	Login	Login	Success
admin	2017-11-30 10:33:28	192.168.101.253	System	User	Login	Login	Success
admin	2017-11-30 03:46:43	192.168.101.253	System	User	Login	Login	Success
admin	2017-11-29 19:27:49	192.168.101.253	System	User	Login	Login	Success
admin	2017-11-29 19:05:23	192.168.101.253	System	User	Login	Login	Success
admin	2017-11-29 17:18:17	192.168.101.253	System	User	Login	Login	Success

### Highlight 8: 3rd Party API (Application programming interface)

The ZKBioSecurity platform can be integrated with multiple applications of 3rd party software. Typically, the functions include data input and system queries.



### Highlight 9: DNS

When using ZKBioSecurity on a WAN (Wide Area Network) the terminals and controllers can be accessed and configured outside the LAN (Local Area Network) by using a DNS (Domain Name Server). Using an IP address provided by the local internet provider, the end user is able to connect to the service via the DNS and manage the system.



### Highlight 10: Advanced DESFire card Management

#### High Security Level

DESFire credentials are among the most secure RFID credentials in existence. There is no recorded case of a DESFire credentials being successfully copied or beaten. It is the perfect fit for high security areas

#### Enhanced Security by distribution code

DESFire credentials can be given a unique distribution code for enhanced security. DESFire cards cannot be copied without this unique distribution code.

#### Flexible distribution code management

The distribution code is managed by the ZKBioSecurity software. No extra hardware is needed for this function.

#### Support Online firmware upgrade

With its new RS485 communications protocol DESFires credential readers support online upgrades for rapidly reduced on-going maintenance cost.



### Highlight 11: Access Control Supports Visible Light Facial Recognition

Access Control supports all visible light recognition terminals including FaceDepot Series, SpeedFace Series, G4 and Horus, all visible light template can be synchronized and shared with all visible light terminals under the ZKBioSecurity environment.





## Personnel

Personnel consists of two parts: Department Management and Personnel Management. Department Management is designed to set the company's organizational chart. Personnel Management is for personnel information, departments and sub-departments (excess of 10 levels) and to maintain and manage personnel settings.

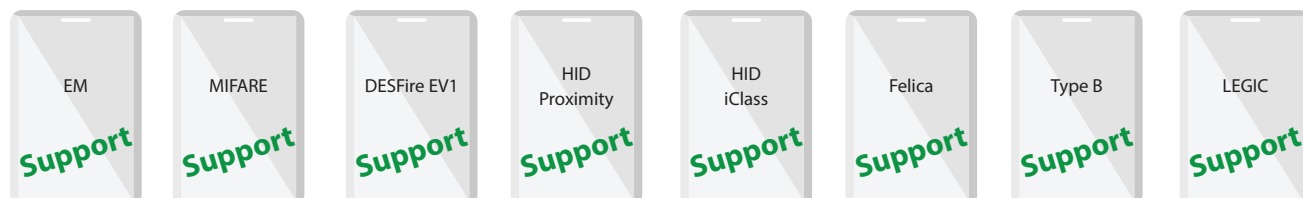


## All-in-one Solution (Area/ Department)

ZKBioSecurity has a user-friendly all in one personnel registration interface, which can enable administrators to input employee's information and staff enrollment (including fingerprint, PROX cards) and user's photo in one single page.

## Supports Various Cards Format

ZKBioSecurity is compatible with most PROX card formats, such as: EM, MiFare, DesFire EV1, Desfire EV2, Legic, HID Proximity, HID iClass, Felica, Type B, ... etc.



## Statistics

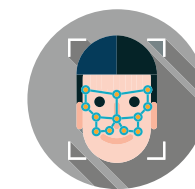
ZKBioSecurity has an overview function for viewing the number of personnel, the number of fingerprint templates, facial template, finger vein template, card number, gender and other statistical information.

Statistical Type	Current Total
Male	0
Female	0
Personnel Quantity	2
Fingerprint Quantity	0
Face Quantity	0
Finger Vein Quantity	0
Number of cards held	0

This is the sample of the ZKBioSecurity Statistics list, as the graph shown, it can help administrators easily and clearly observe the company demographic distribution.

## Support various verification (Fingerprint, Finger Vein, Card...etc.)

ZKBioSecurity supports various kinds of biometric verifications, such as, fingerprint, finger vein, PROX card, which submitted data will be recorded by ZKBioSecurity.



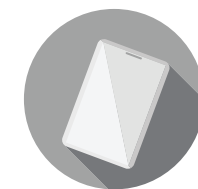
Face Recognition



Finger Print Recognition



Finger Vein Recognition



EM Card Recognition

Biological Template Quantity 0

## Personnel

Personnel consists of two parts: Department Management and Personnel Management. Department Management is designed to set the company's organizational chart. Personnel Management is for personnel information, departments and sub-departments (excess of 10 levels) and to maintain and manage personnel settings.



## All-in-one Solution (Area/ Department)

ZKBioSecurity has a user-friendly all in one personnel registration interface, which can enable administrators to input employee's information and staff enrollment (including fingerprint, PROX cards) and user's photo in one single page.

## Supports Various Cards Format

ZKBioSecurity is compatible with most PROX card formats, such as: EM, MiFare, DesFire EV1, Desfire EV2, Legic, HID Proximity, HID iClass, Felica, Type B, ... etc.



## Statistics

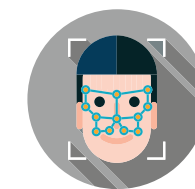
ZKBioSecurity has an overview function for viewing the number of personnel, the number of fingerprint templates, facial template, finger vein template, card number, gender and other statistical information.

Statistical Type	Current Total
Male	0
Female	0
Personnel Quantity	2
Fingerprint Quantity	0
Face Quantity	0
Finger Vein Quantity	0
Number of cards held	0

This is the sample of the ZKBioSecurity Statistics list, as the graph shown, it can help administrators easily and clearly observe the company demographic distribution.

## Support various verification (Fingerprint, Finger Vein, Card...etc.)

ZKBioSecurity supports various kinds of biometric verifications, such as, fingerprint, finger vein, PROX card, which submitted data will be recorded by ZKBioSecurity.



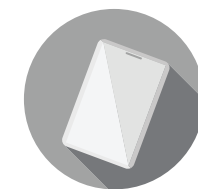
Face Recognition



Finger Print Recognition



Finger Vein Recognition



EM Card Recognition

Biological Template Quantity 0



## High-speed Portable HD Doc Scanner Supports

User's Information Capturing + Passport Photo + OCR Recognition

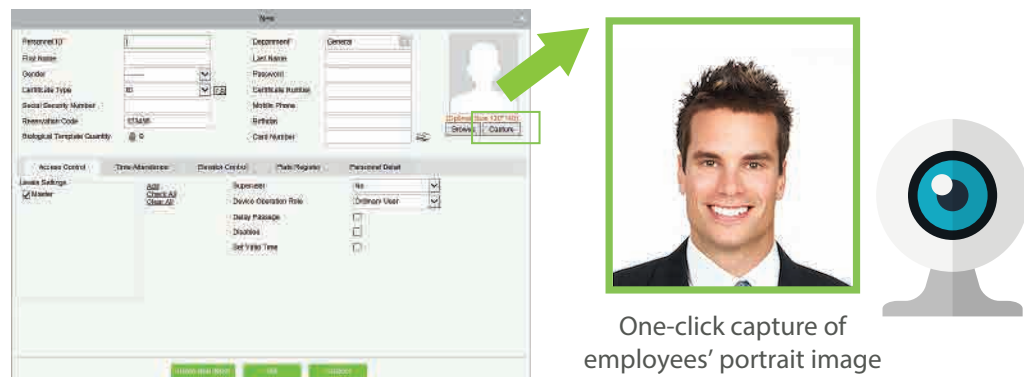
During visitor registration, it supports one-click capture of users' portrait image, passport photo and saving, and uses OCR function to automatically read identity document (identity card, passport etc.) and fill in effective information in order to realize quick registration.

### Passport Photo + OCR Recognition



OCR function automatically reads identity document

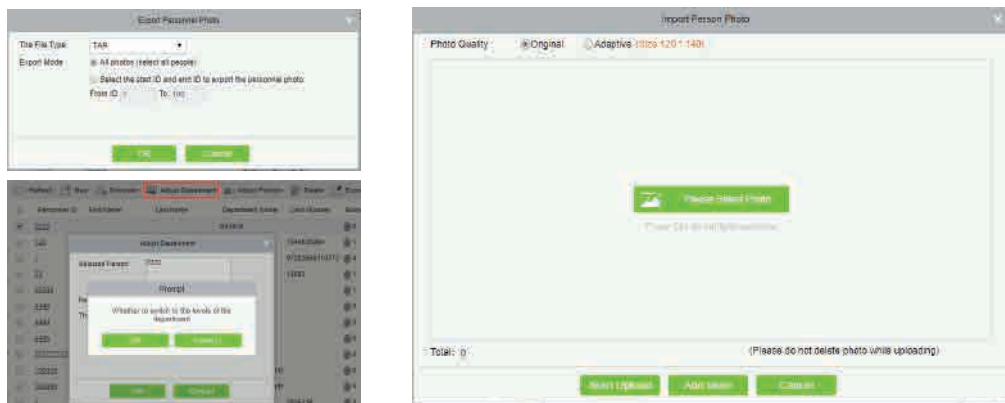
### User's Portrait Capturing or Uploaded from the local PC



One-click capture of employees' portrait image

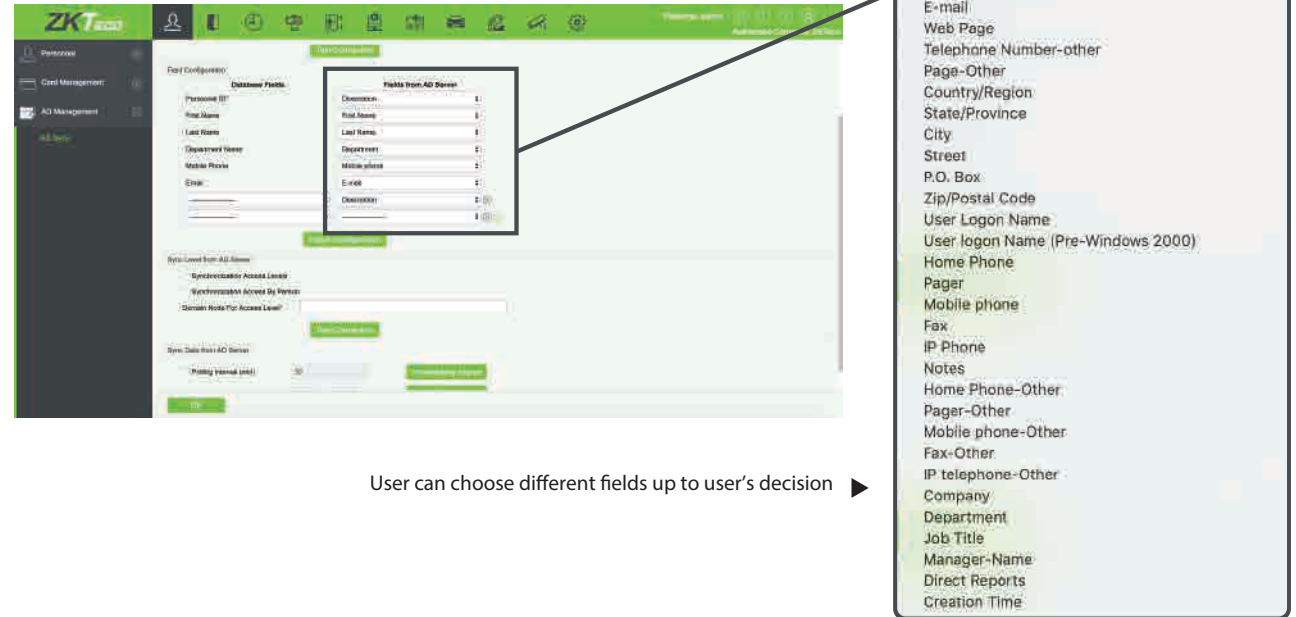
## Batch import & export photos

ZKBioSecurity supports batch export and import photos to enhance the app management flexibility.



## Active Directory with the database field

User can call different fields from the AD Sever to map with the database fields, ZKBioSecurity almost opens all the field options that are available.



User can choose different fields up to user's decision

If the pre-set AD fields and Database fields are not enough for the user, ZKBioSecurity open 5 more extra fields for users, and user can setup both database fields and AD sever fields.



▲ Users can add their custom fields

▲ Max support 5 extra custom fields

There are more synchronization options available in the ZKBioSecurity 3200, User can choose either synchronizing the Access Level from other AD server only or synchronizing the personnel information with Access Level from other AD server.

Sync Data from AD Server

☐ Polling Interval (min) 30 Immediately Import

☐ Sweep Interval Every 3 Day 0 o'clock Immediately Import

- ▲ Synchronize the "new added" info from other AD, and user can setup the synchronizing schedule (from 0 (real time) to max.59 mins)
- ▲ Synchronize all the info from other AD every time and user can setup the schedule (from 1 day to max. 28 days)

User can also set information categories that need to be synchronized. Synchronizing the "New Added" information from other AD sever, and schedule up the syncing schedule from real time to max. 59 mins. Synchronizing all information from AD server every time, and schedule how frequent the will be synchronized once, from 1 day to Max.28 days

Sync Level from AD Server

☐ Synchronization Access Levels
 ☐ Synchronization Access By Person

Domain Node For Access Level\*

- ▲ It can synchronize the access level from another AD (Active directory)
- ▲ It can synchronize personnel with access level from other AD (Active directory)

## Supports Mobile APP Personnel Photo as Visible Light Facial Recognition Registration

When using BioSecurity Mobile APP, when personnel sets a profile picture in the APP, that profile picture will be used as the visible light facial recognition template.



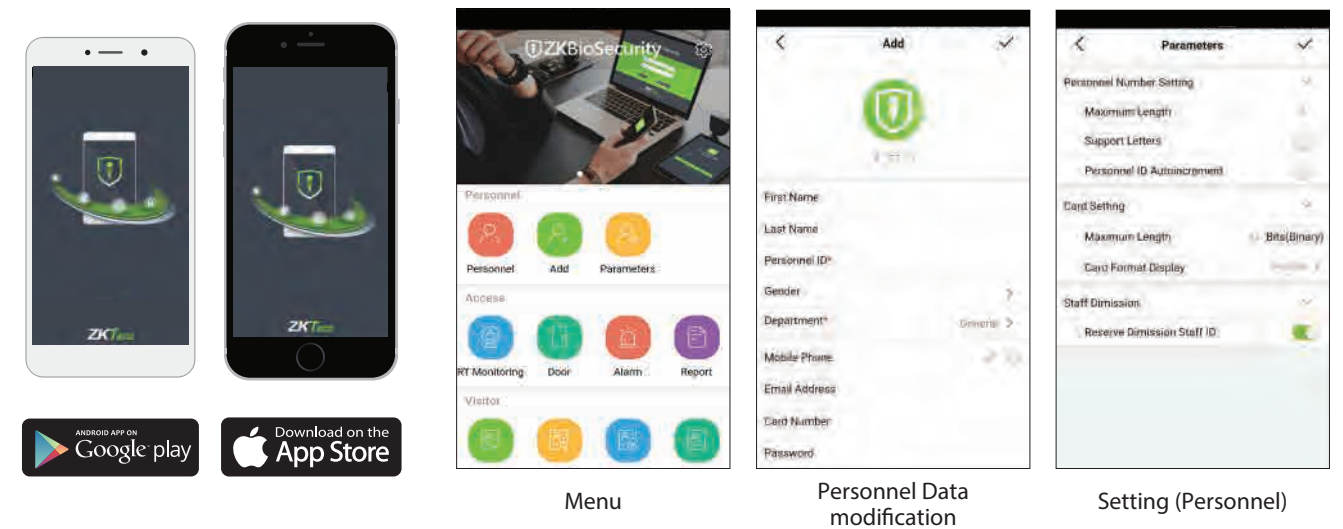
## Report

Personnel Module supports to generate the summary report for administrator including, Daily Attendance, Leave Summary, Daily Report, Monthly Detail, Monthly Statistics, Departmental Report, Annual Report, Automatic Report.



## Support iPhone and Android APP

Offers Personnel Editing / Enrollment functions. Access control floor distribution Function enables users to real-time add, delete or check information of particular staffs in mobile app.



\* Users may download ZKBioSecurity App. via App Store on iOS or Google Play Store on Android



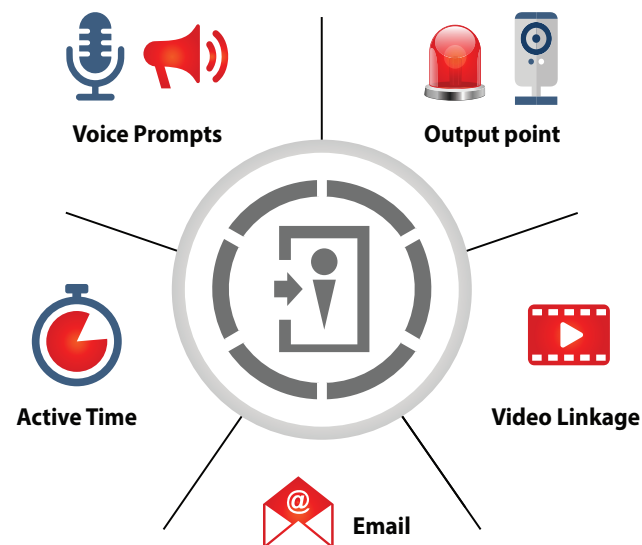
## Access Control Module

Access Control is web-based management system which enables advanced access control functions, management of networked access control panel via computer, and unified personnel access management. The access control system sets door opening time and levels for registered users.



## Global Linkage

One of the highlighted functions of the ZKBioSecurity is the Global Linkage. It is able to automate system cross platform interactive functions and notifications system. There are multiple tiers to the alert process including relay inputs and outputs, video recording and photo capture (ONVIF), active time, email notification and linkage voice prompts.



### Output point

With Global I/O, Output point allows administrators to configure linkages where various events can be linked to any other input/ output/ events in the system. These linkages can be activated by various events with different access levels, invalid cards, unrecognized fingerprints and motion detection might trigger correlated outputs (Alarm, IP Camera ...etc.).

### Video Linkage

Photo capture, video recording and Pop-up video to warn administrators, when exceptional events take place, such as, Duress Finger / Card triggered, blacklist users, door open forcefully and illegal time zone access, etc. Moreover, the video could include footage before the events occur. Video footage length could be up to 180 seconds.

### Active Time

Administrator can set an active time for the linkage by pre-defined time zones or date range.

### Email Notification

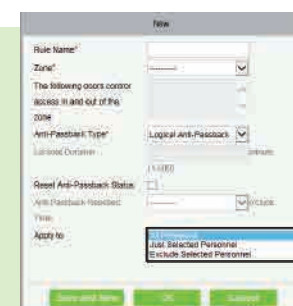
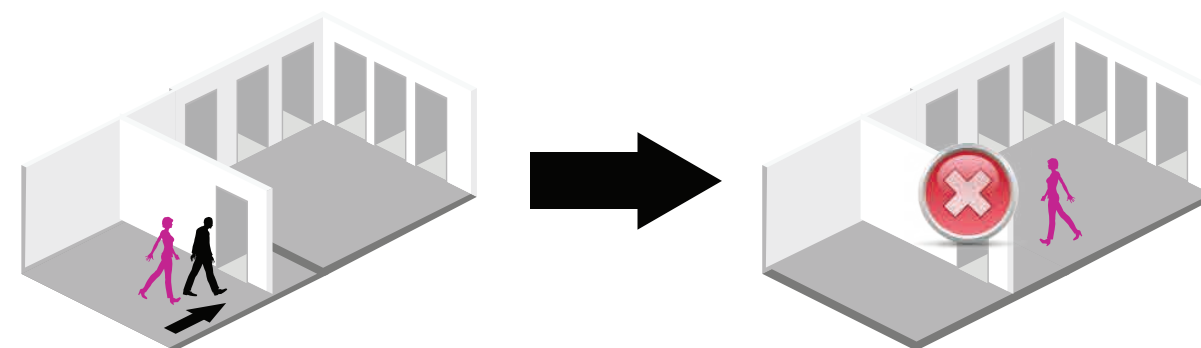
Email notification allows the system automatically send out email to notice administrators once specific events occurs.

### Linkage Voice Prompts

Voice linkage will announce a series of warning messages which are accompanied by siren sounds. These linkage announcements will be triggered by particular actions.

## Global Anti-Passback

Global Anti-Passback is a security function designed to eliminate authorized and/or unauthorized personnel from going into area without presenting proper credentials (i.e. tail-gating). In the event a person enters a secure area without authentication, as the red colored person in the image below, that person will be detained in the secure area, even if they have access rights to the area. Administrative personnel will have to override the system to allow the unauthorized person to exit then enter the area in the future.



All Personnel  
Just Selected Personnel  
Exclude Selected Personnel

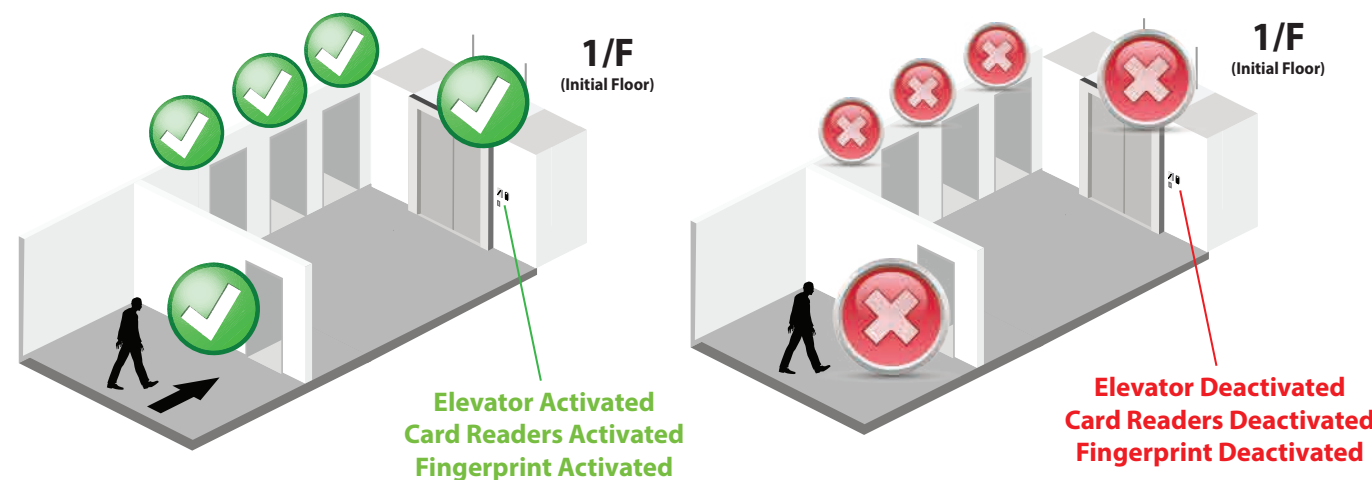
**All Personnel:**  
Global Anti-Passback will work on all people.

**Just Selected Personnel:**  
Anti-passback is only effective for these selected personnel.

**Exclude Selected Personnel:**  
The anti-passback is only effective for these exclude selected personnel.

## Global Interlock

Global Interlock is an advanced security function that heightens the security level by interacting with different security areas. It is designed to prevent persons from opening more than one door at a time even, if the persons have multiple door access authorities. It is able to precisely appoint access authorization including activations of access authorization of specific doors when the correlated doors are locked properly. Most commonly used in man-traps.

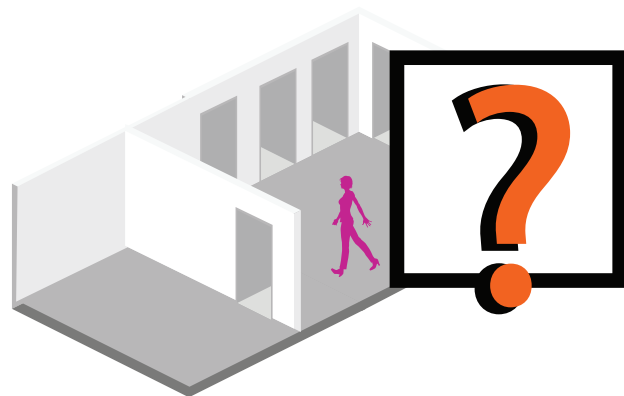


Elevator Activated  
Card Readers Activated  
Fingerprint Activated

Elevator Deactivated  
Card Readers Deactivated  
Fingerprint Deactivated

## Who is Inside

By using the "Who is inside" function, administrators can verify how many people remain in a specific area/room, with detailed personal information and access time. This function is typically used in a disaster situation where mustering is required.



John Wilkinson is inside the Area A

Personnel ID: [ ] First Name: [ ] Last Name: [ ] More [ ]

The current query conditions: None

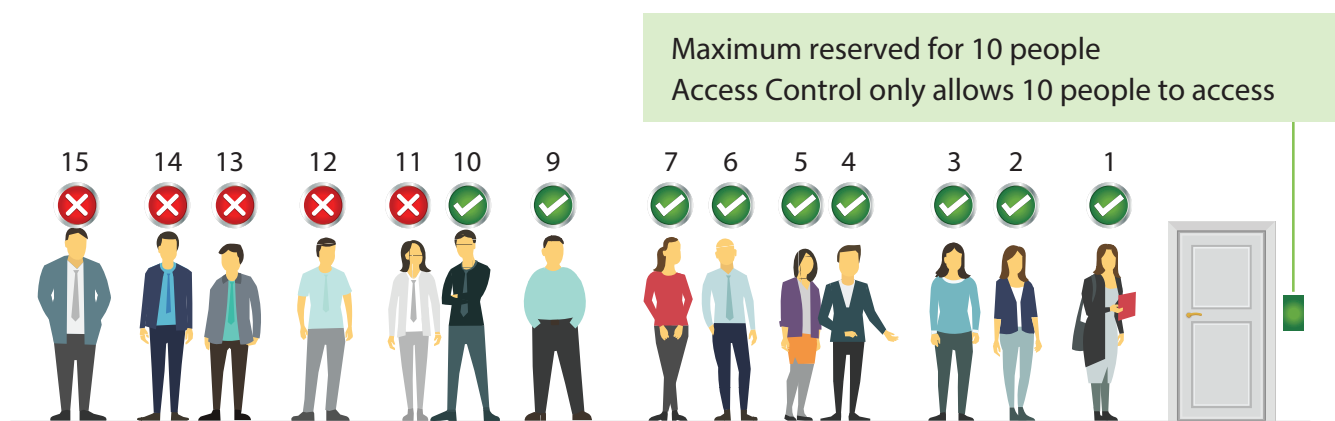
Refresh Delete Personnel Export

All [ ] Area A [ ]

Personnel ID	First Name	Last Name	Department	Card Number	Last Access Time	Last Access
018964	John	Wilkinson	Account	015635	5:00pm	Read

## Access Limitation

Allows administration the ability to limit the number of people in a limited space. Example: If a room is reserved for 10 people, the system can be programmed to accept only 10 authorized credentials, when one person leaves another person can enter. /constantly keeping the number of occupants at 10.



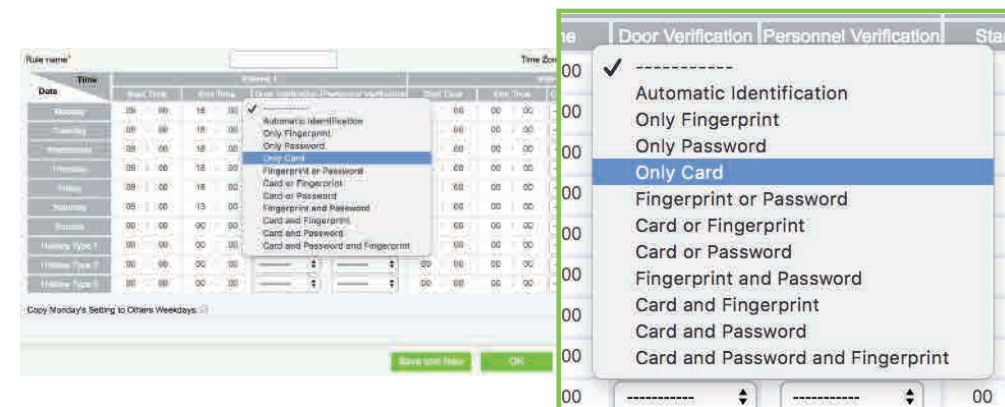
## E-Map

E-Map enables administrators to have a clear and accurate view of all event points. With its cutting edge multi-level E-map structure, administrators can simultaneously monitor multi-levels / areas events.



## Access Control Time Zone (Card/ Fingerprint)

Allows administration to set specific time zones during the day that specific credentials are valid. Example; During the normal business hours the records room can be access with a PROX card, however after 5:00 a person would be required to use the PROX card as well as fingerprint and/or facial recognition and/or password. Multi-authentication during specific time zones.



## Auxiliary Input and Output

Name	Device Name	Number	Printed Name
Auxiliary Input-1	216.27.0.1	1	IN1
Auxiliary Input-1	192.168.217.221	1	IN1
Auxiliary Input-2	192.168.217.221	2	IN2
Auxiliary Input-3	192.168.217.221	3	IN3
Auxiliary Input-4	192.168.217.221	4	IN4
Name	Device Name	Number	Printed Name
Auxiliary Output-1	216.27.0.1	1	OUT1
Auxiliary Output-1	192.168.217.221	1	OUT1
Auxiliary Output-2	192.168.217.221	2	OUT2
Auxiliary Output-3	192.168.217.221	3	OUT3
Auxiliary Output-4	192.168.217.221	4	OUT4

### Auxiliary Input:

Used to connect to devices, such as, the infrared sensor or smoke sensor, exit button, contact sensor, door contact and intrusion alarm.

### Auxiliary Output:

Mainly connected to alarm, it is used when linkage is working, such as, burglar alarm, alarm, LED light, buzzer.

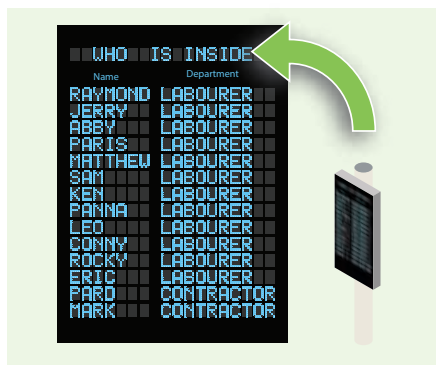


## Flexible and editable text function for LED / LCD Display Panel

ZKBioSecurity provides a programmable LED / LCD display function to show real time and editable “who is inside” personnel information. It allows for users to generate reports showing where card holders are within a facility. As a card holder swipes he/she will be granted access to the area and his/her name and location will be simultaneously shown on the connected LCD screen.



LED / LCD display to show who is inside the specific area



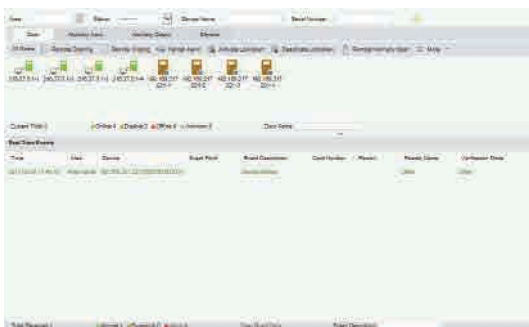
LED Display



LCD Display

## Real Time Monitoring

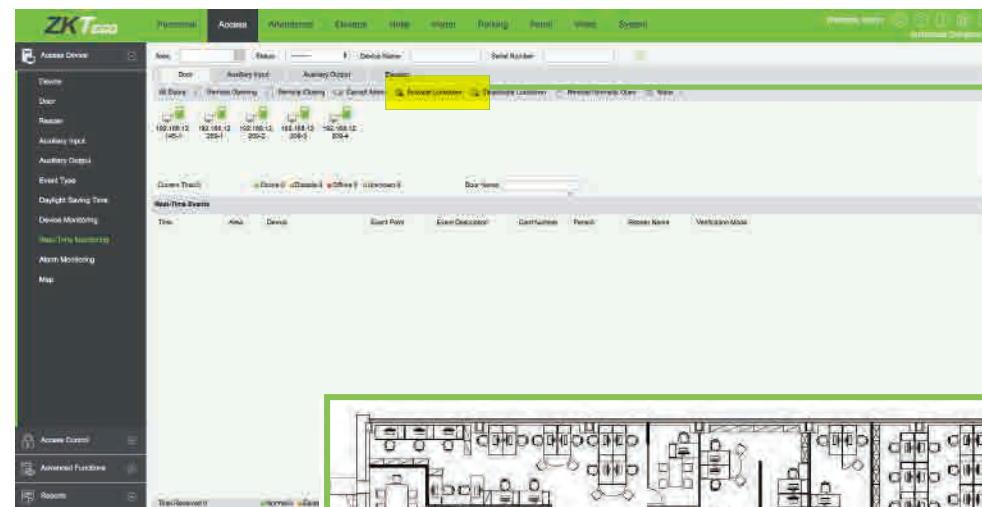
ZKBioSecurity enables users to monitor the entire system, real time, by showing all the detailed status, including any abnormal situation at a door with support of video linkage and photo capture pop-up when an abnormal security event occurs.



	Door opening timeout, Relay closed /Without relay status, Door Sensor Opened		Door opening timeout, Relay opened/Without relay status
	Door opening timeout, Relay closed/Door Sensor Closed		Door opening timeout, Relay opened/Door Sensor Closed
	Door closed alarming, Relay closed/Without relay status		Door closed alarming, Relay opened/Without relay status
	Door sensor unset, Door alarming, Relay closed		Door sensor unset, Door alarming, Relay opened
	Door opening timeout, Without relay status/Door Sensor Closed		Door locking
	Device banned		Door Offline
	Door sensor unset, Relay closed /Without relay status		Door sensor unset, Relay opened/Without relay status
	Online status Door closed, Relay closed/Without relay status		Online status Door closed, Relay opened/Without relay status
	Online status Door opened, Relay closed/Without relay status		Online status Door opened, Relay opened/Without relay status
	Door opened alarming, Relay closed		Door opened alarming, Relay opened

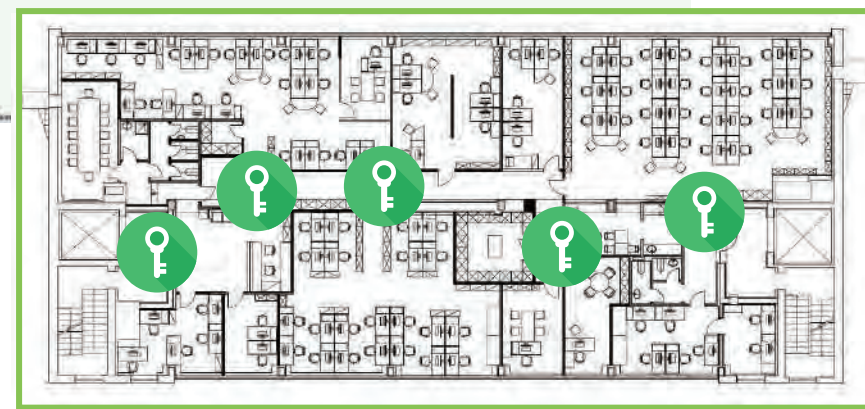
## Remote Lock-Down

Administrators can remotely open/close and/or lock down all or selective doors on the system. When in ‘Lock-Down’ all access is overridden until lock down is deactivated.



Activate Lockdown

When the “Active Lockdown” command is activated, all doors will be locked at the same time



## Access Record with Customizable Formats

Access records are an essential part of the decision to choose the appropriate Access Control System. ZKBioSecurity provides customizable detailed reports simply by selecting the desired fields to display.

Time From:2015-02-26 00:00:00To:2015-05-26 23:59:59Personnel ID:Device Name:More

The current query conditions: Time From:(2015-02-26 00:00:00) To:(2015-05-26 23:59:59)

Refresh

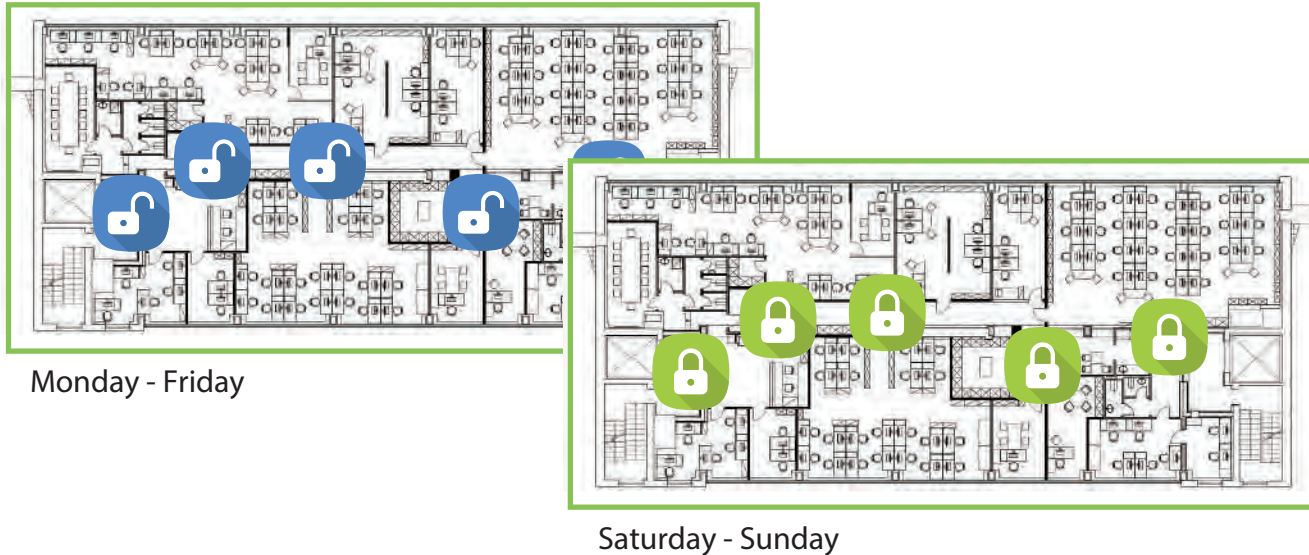
Clear All Data

Export

Time	Device Name	Event Point	Event Description	Media File	Personnel ID	First Name	Last Name	Card Number	Department Name	Reader Name	Verification Mode
2015-05-26 16:41:52	192.168.1.134	192.168.1.134-1	Normal Verify Open		54	dany	nee	2182405	General	192.168.1.134-1	Only Fingerprint
2015-05-26 16:41:49	192.168.1.134	192.168.1.134-1	Normal Verify Open		54	dany	nee	2182405	General	192.168.1.134-1	Only Fingerprint
2015-05-26 16:41:46	192.168.1.134	192.168.1.134-1	Unregistered Personnel							192.168.1.134-1	Only Fingerprint
2015-05-26 16:41:42	192.168.1.134	192.168.1.134-1	Normal Verify Open		54	dany	nee	2182405	General	192.168.1.134-1	Only Fingerprint
2015-05-26 16:41:39	192.168.1.134	192.168.1.134-1	Unregistered Personnel							192.168.1.134-1	Only Fingerprint
2015-05-26 16:41:37	192.168.1.134	192.168.1.134-1	Normal Verify Open		54	dany	nee	2182405	General	192.168.1.134-1	Only Fingerprint
2015-05-26 16:41:33	192.168.1.134	192.168.1.134-1	Unregistered Personnel							192.168.1.134-1	Only Fingerprint
2015-05-26 16:41:30	192.168.1.134	192.168.1.134-1	Unregistered Personnel							192.168.1.134-1	Only Fingerprint
2015-05-26 16:41:27	192.168.1.134	192.168.1.134-1	Normal Verify Open		54	dany	nee	2182405	General	192.168.1.134-1	Only Fingerprint
2015-05-26 16:41:24	192.168.1.134	192.168.1.134-1	Unregistered Personnel							192.168.1.134-1	Only Fingerprint
2015-05-26 16:41:22	192.168.1.134	192.168.1.134-1	Duress Open Alarm		54	dany	nee	2182405	General	192.168.1.134-1	Only Fingerprint
2015-05-26 16:41:18	192.168.1.134	192.168.1.134-1	Normal Verify Open		54	dany	nee	2182405	General	192.168.1.134-1	Only Fingerprint

### Limit Entry by Time Zone

ZKBioSecurity is extremely flexible, allowing the administrator to schedule holidays, half-time days and special applications.



### Support Green Label Standalone Terminal Reader

ZKTeco Green Label controllers can also support all ZKTeco Green Label Stand Alone readers. ZKBioSecurity software can manage settings such as personnel info, access levels and much more.



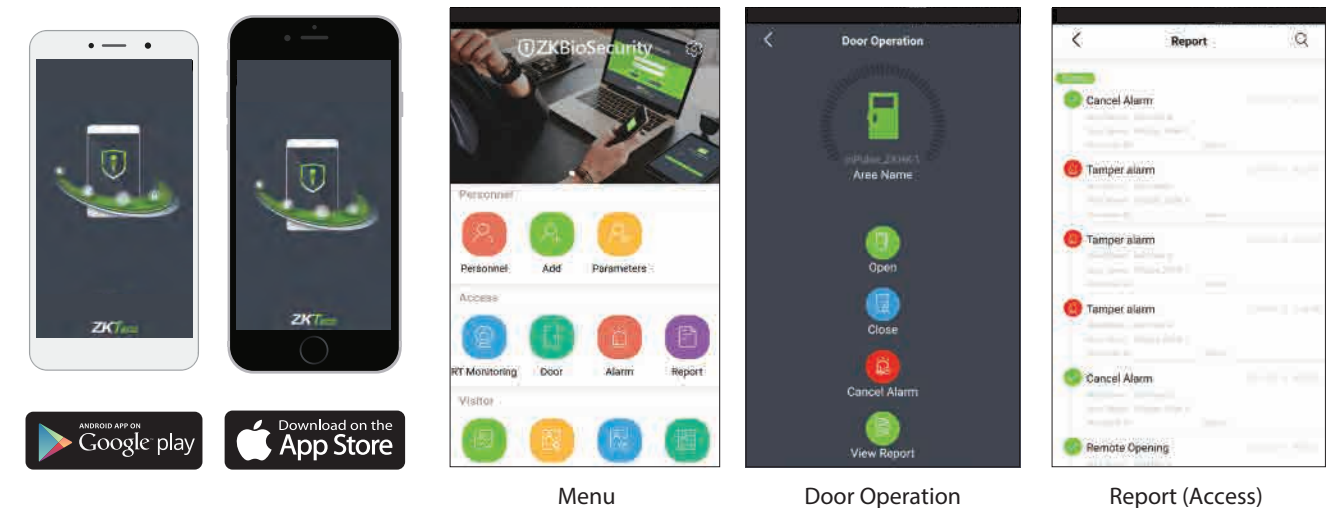
### Report

The ZKBioSecurity Access Module generates several reports including daily attendance, leave summary, monthly detail, monthly statistical, department reports, annual reports and scheduled automatic reports.



### Support iPhone and Android APP

Offers real-time access control records, users are able to check particular door access control records simply by logging in on mobile phones, and may check alarm records in alarm page and may perform positioning of alarm locations for the convenience to track accidents. ZKBioSecurity also supports remote door opening and closing, users may perform remote door control with a few simple clicks on their phones.

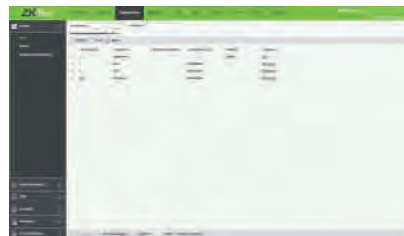


\* Users may download ZKBioSecurity App. via App Store on iOS or Google Play Store on Android



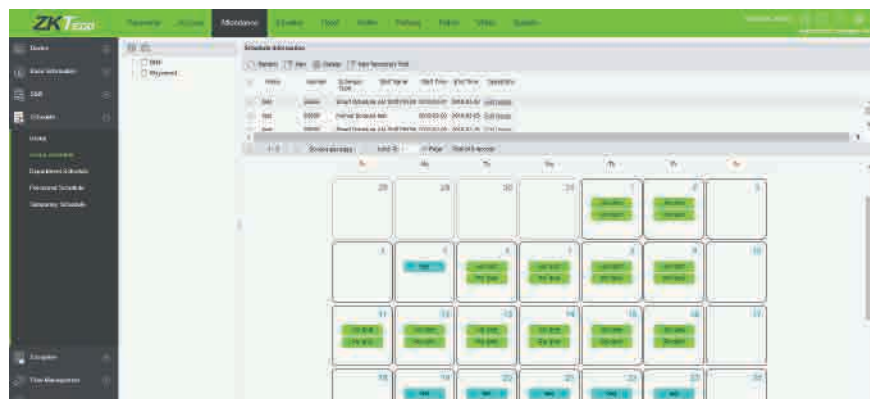
## Time & Attendance

As an "All in One" security platform, the ZKBioSecurity contains a web-based time & attendance module. Administrators can manage the Time & Attendance module from anywhere they have access to the Internet. Moreover, this is a powerful time & Attendance system, which can handle most of the complicated time & attendance circumstance, such as, flexible shifts, multi-level OT, cross day shift and online leave application with multi-level approval.



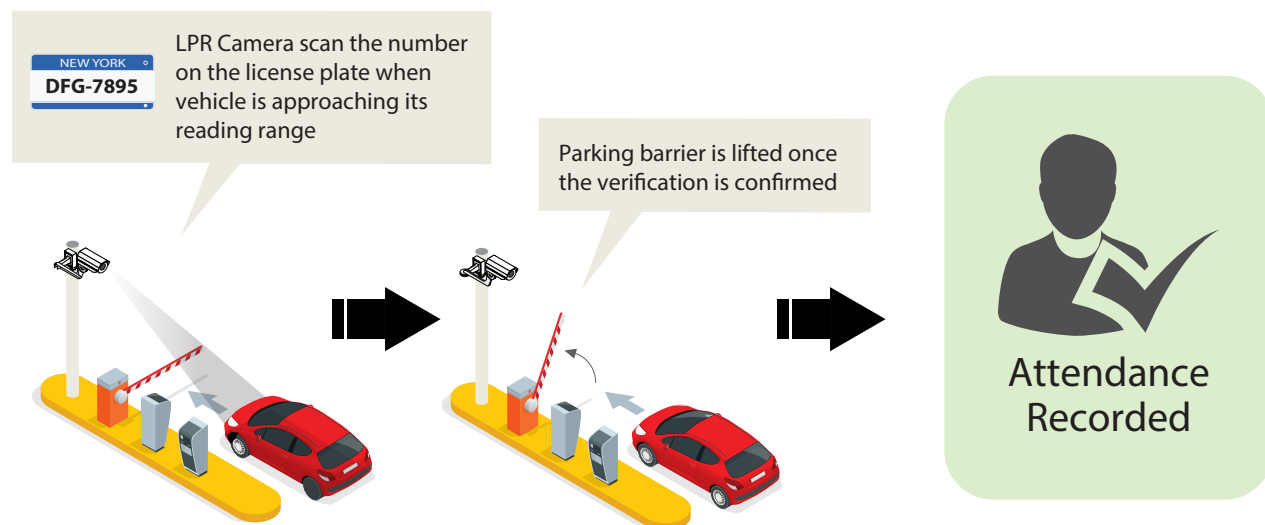
## Flexible Group Scheduling

ZKBioSecurity provides flexible group scheduling in the Time & Attendance module, providing users to group their employees, the entire company and individual departments with the same attendance rules. Users have the ability to set attendance parameters like check-in, check-out and overtime rules.



## Access Control and LPR Attendance Tracking

Unlike most Time & Attendance systems on the market, ZKBioSecurity can link with the access control terminal and panel linked to the LPR (License Plate Reader) Terminal and retrieve records for time & attendance calculations.



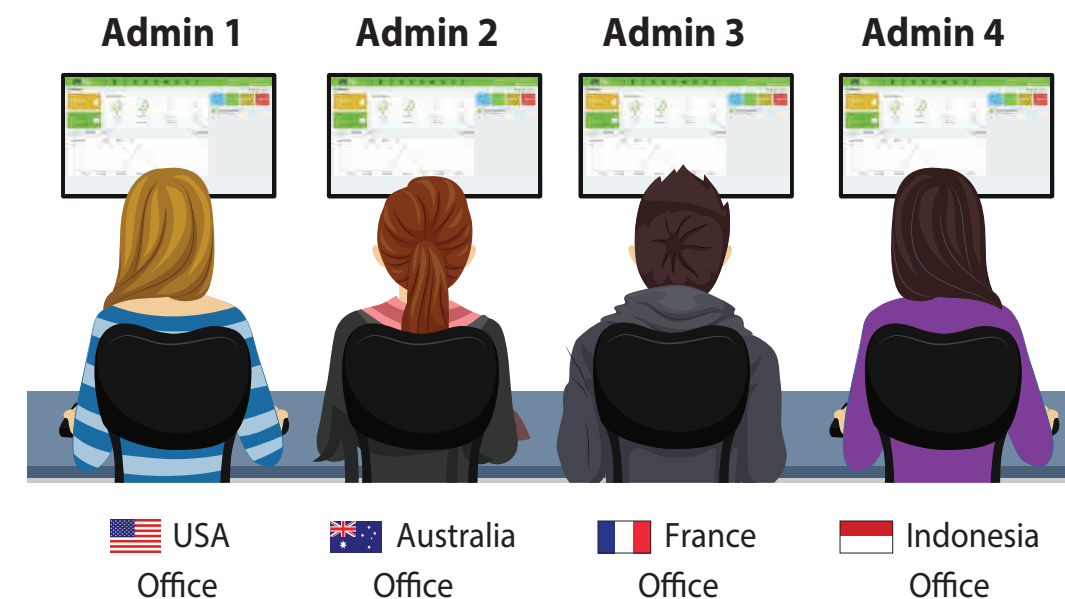
## Employee Self Log-In

Employee Self-Log-in is a cutting-edge function for employees to enter the server to perform job-related functions anywhere and anytime. An employee can up-date personal information, leave an application, submit and exception, including OT, manual punch-in, shift adjustment, etc., and request a self-report inquiry.



## Multi-Location

Users can access the centralized system anywhere by their web browser to remotely manage thousands of standalone terminals and controllers under wide area network (WAN)



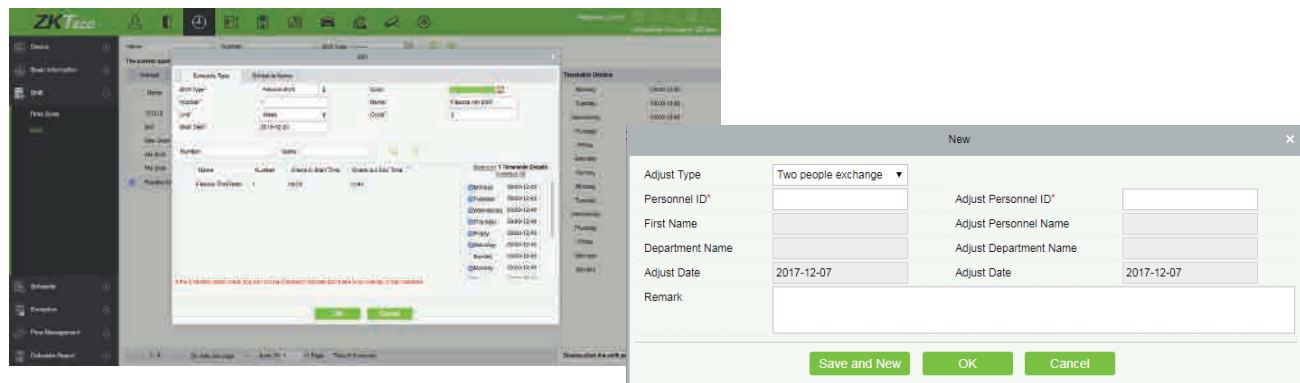
## Merge with the 3rd Party HR Management

In order to extend the ZKBioSecurity functionality, ERP and HR integration is possible by generating automatic data with custom attributes, such as, staff name, department, area, staff ID, etc.



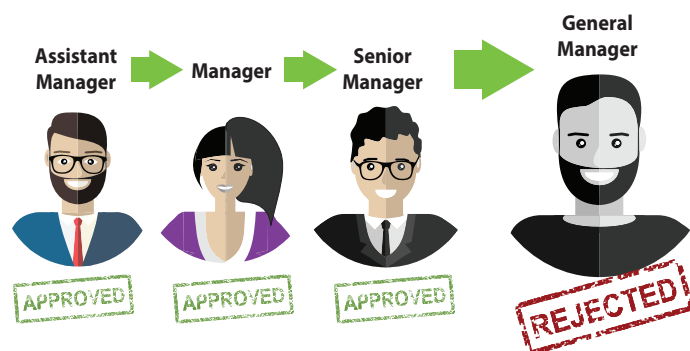
## Flexible Shift Scheduling

There are different T&A shift requirements in different industries, some of them are subject to chaos situation, such as, retail, F&B and patrol guard, a shift management with flexibility is essential for their operation management.

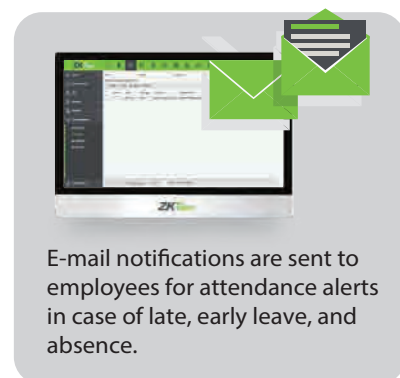


## Multi-Level Approvals and Automatic E-mail Alerts

Email notifications for the attendance exceptions and multi-level approvals.



Leave or manual punches can be applied through ZKBioSecurity, which can be approved by multi-level approvers who are set by hierarchical level.



E-mail notifications are sent to employees for attendance alerts in case of late, early leave, and absence.

## Report

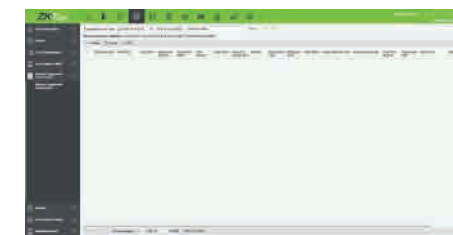
Attendance Module supports to generate reports for administrators, such as, Daily Report, Leave Summary, Monthly Detail, Monthly Statistical, Department Report, etc.

To maximize the working efficiency, the ZKBioSecurity supports the automatic report generating with custom formats & fields.



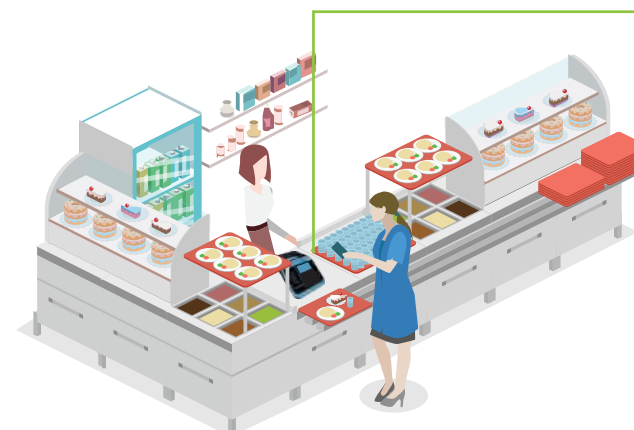
## Consumption Management

ZKBioSecurity consumption is a desktop-based restaurant management software module designed to offer restaurants all necessary and useful tools to speed up service and increase efficiency of operation. The customizable options offered in the system is ideal for any restaurant type including fine dining restaurants, bistros, fast food chains, cafes, bars, etc. ZKBioSecurity consumption module helps staffs to complete their tasks efficiently in line with their operational style and business.



## Diversification of equipment use and consumption mode

Users may switch the device usage to consumer machine, cash register or subsidy machine any time to meet the multi-scenario consumption demand. Users may also choose to set consumption modes: fixed value mode, amount mode, key value mode, counting mode, commodity mode and timing mode.

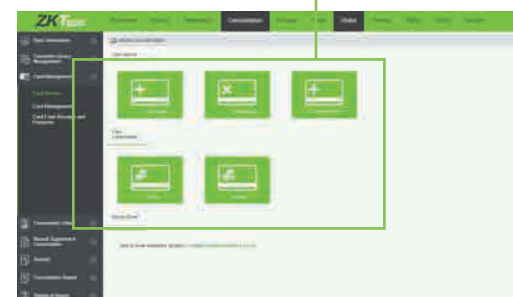


Consumption mode

- 1) Fixed value mode
- 2) Amount mode
- 3) Key value mode
- 4) Counting mode
- 5) Commodity mode
- 6) Timing mode

## Support card management and multiple card operations

Users may conveniently modify card information, issue card, return card (support non-card return card), replenish card and other card operations, at the same time it is able to recharge, refund, all card information, card and cash receipts, loss details will be recorded for the convenience of inquiry and system management.



Card Service

- Issue Card
- Return Card
- Card Replacement

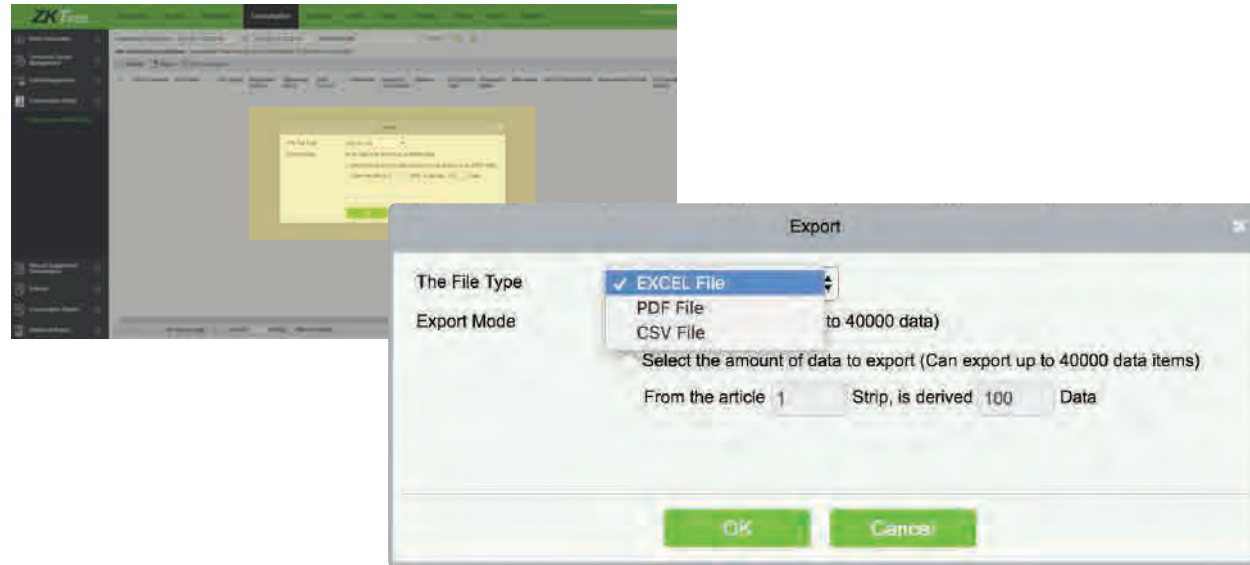
Consumption service

- Top Up
- Refund



## Export consumption details report EXCEL/PDF/CSV

Personnel consumption details report supports exporting to EXCEL/PDF/CSV format, and consumption report is screened according to the time period required for the query, everyone can have a clear idea about consumption.



## Subsidy Management

Attracts an increasingly wide audience by offering benefits to customers who are loyal to your store or to regular guests of your restaurant. With the ZKBioSecurity's consumption module, you can offer special prices to specific categories of customers or companies.

Subsidy collection process:

1. Software registration subsidy.
2. After approval of approval issued to the online subsidy machine.
3. Personnel on subsidy machine to swipe card to receive subsidies.



## Consumption Hardware Display

ZKBioSecurity currently supports Promerc-10, promerc-20 consumer terminals, connected via TCP/IP, which makes it easy for administrators to set up device usage, consumption mode, and operate card issuance in the background to link hardware to manage consumption systems.



ProMerc-10

ProMerc-20

## Report

The consumption report includes 9 kinds of statements such as issue card table, top up table, refund table, subsidy table, card suspend and resume table. The statistical report includes personal consumption statistics table, department summary table, restaurant summary table, equipment summary table, receipt, Summary table, meal summary table



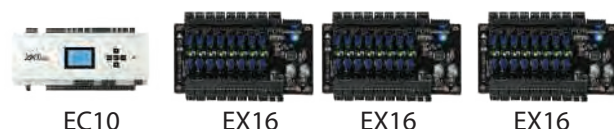
## Elevator

Elevator Control is designed to control the elevator access authentication, to manage personnel's access rights (using PROX card, Fingerprint, and other Biometric technology) to different floors and supervise elevator events. Users may set registered user's right to floors and interact with the access control module to achieve the one stop management purpose. Only the authorized users can access to certain floors and doors within a period of time after being authenticated.



## Support Maximum 58 Floors

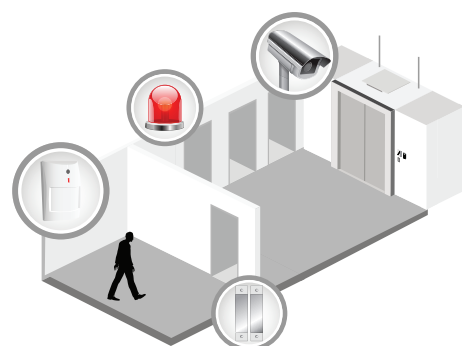
ZKBioSecurity has designed a unique function for elevator control, the EC10 panel and EX16 floor extension board, it provides customers the most secure, scalable, versatile and affordable access control solution available today for elevators. It supports maximum 58 floors elevator.



= 58 Floors

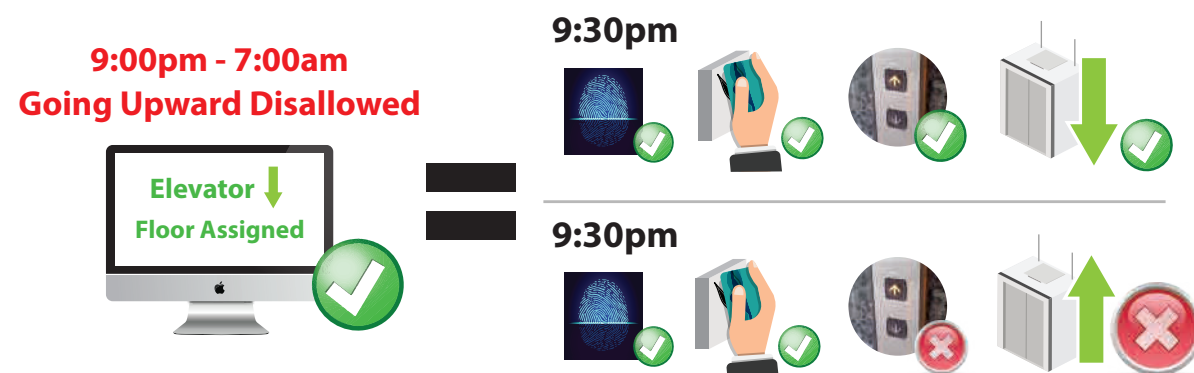
## Global Linkage

Elevator control supports the global linkage function to trigger events / alarms once condition fulfilled, such as, unregistered personnel, illegal time zone access, duress verification, etc. The photo capture and video recording also are the highlight of this function.

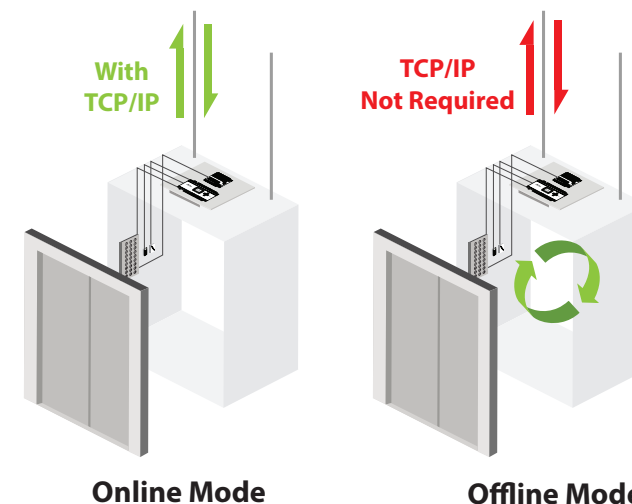


## Elevator Operation Limitation by Timeslots

The integration with ZKTeco's products also enables to limit elevators' operation in specific time. For actual implementation, if the elevator control is set to stop operating to go upward between 9:00 p.m. to 7:00 a.m., Unauthorized persons will only be allowed to go downward even with cards for floor access.



## Online Mode/ Offline Mode



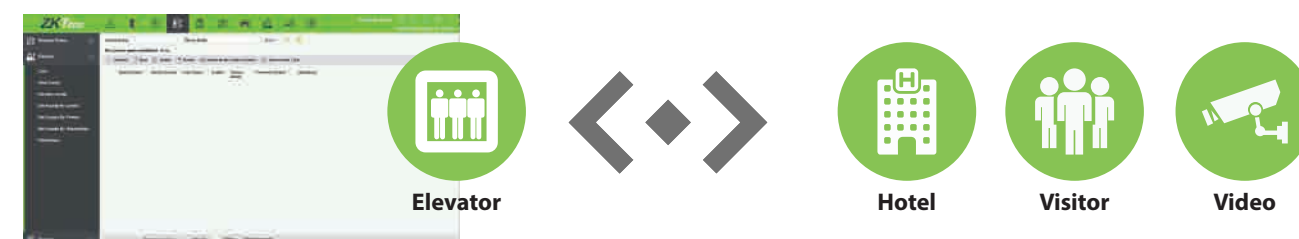
ZKTeco elevator control can either operate in online or offline mode.

**Online Mode:** Require TCP/IP, and all elevator access transactions are stored locally in elevator controller and automatically uploaded to back end server.

**Offline Mode:** Offline data can be read with current Mifare which will not require the TCP/IP. The advantage of using offline mode is the old elevator will also be able to install the elevator control with the low installation cost.

## Hotel & Visitor & Video Module Linkage

One stop access right setting for hotel & Visitor module, administrators can set individual access rights to different floors and doors to maximize the security level for different application, such as, hotel guest can only access to their living floor and limit the visitor to open floor.



## Report

Elevator Control Module supports to generate reports to summary all transaction, exception event, and access right (by floor or personnel).





## Hotel Management

It provides hotel service management functions covering check-in, overstay, check-out, rate settlement, and lock setup and management.



## Online Reservation

Online reservation is the highlight of the hotel management module which enables staffs/ administrators to make remote online room reservation record as long as they are connected with Internet. Moreover, with its user friendly interface, administrators / staffs can clearly check out how many rooms are currently available and easy to reserve special rooms in a period of time for customers.

Room	2018-12-12	2018-12-13	2018-12-14	2018-12-15	2018-12-16	2018-12-17	2018-12-18	2018-12-19	2018-12-20	2018-12-21	2018-12-22	2018-12-23	2018-12-24	2018-12-25	2018-12-26
A1101-VIP															
A1102-VIP															
A1103-VIP															
A1104-VIP															
A1105-VIP															
A1106-VIP															
A1107-VIP															
A1108-VIP															
A1109-VIP															
A1110-VIP															
A2101-single room															
A2102-single room															
A2103-single room															
A2104-single room															



Room can be reserved for the time period.



The room is occupied (not available) in the time period and cannot be reserved.



The room has been reserved



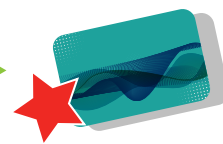
Selected room

## Loss Card

Guests are given the hotel cards once they checked in, if the guest lose their hotel room card, this will be complicated in certain old hotel management system, however, ZKBioSecurity offers a better and simpler way to fix this problem. Hotel staffs only need to select the "Report Lost Card" function and then register a new card for the guests, once the guests swipe the new card on the lock, the new card will replace the old card and delete the old card access right at the same time.



Lost the card



New card  
replace the old card



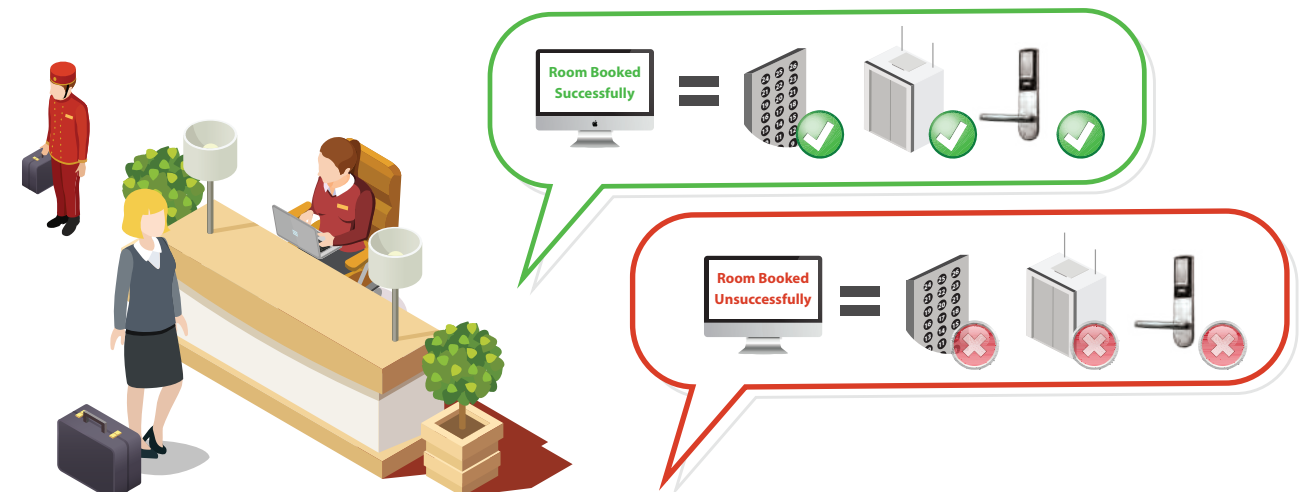
Swipe the new card  
on the right door



Lost card data will be removed  
automatically

## Merge with Access Control and Elevator Module

Elevator control module allows the guest to take the elevator on the specific time, and grants elevator to operate if the elevator to work if there is a booking for the other location. For example, to reserve the hotel room and the elevator, the hotel staff just simply click out the corresponding date and time via ZKBioSecurity software web based platform. This proven and recognized procedure can prevent the guest re-enter the hotel room and the elevator with the lost card.



## Advanced Payment Option of Consumption Management

Hotel guests often need to make payments by cash or credit card. ZKBioSecurity offers an advanced option for guests to pay when checking out. Simply present hotel cards after having meal wherever at hotel lounges, coffee shops or restaurants, and guests may pay charges when leaving the hotel.



After Dinner  
at Mini Bar  
at Coffee Shop  
at Restaurant



**Advanced Option**  
Pay bills with hotel card

## Report

To complete the hotel management function, the report is necessary , and ZKBioSecurity hotel management module do offer detailed report, including, guest check in, room check in, room charge, issue card, unlock record.



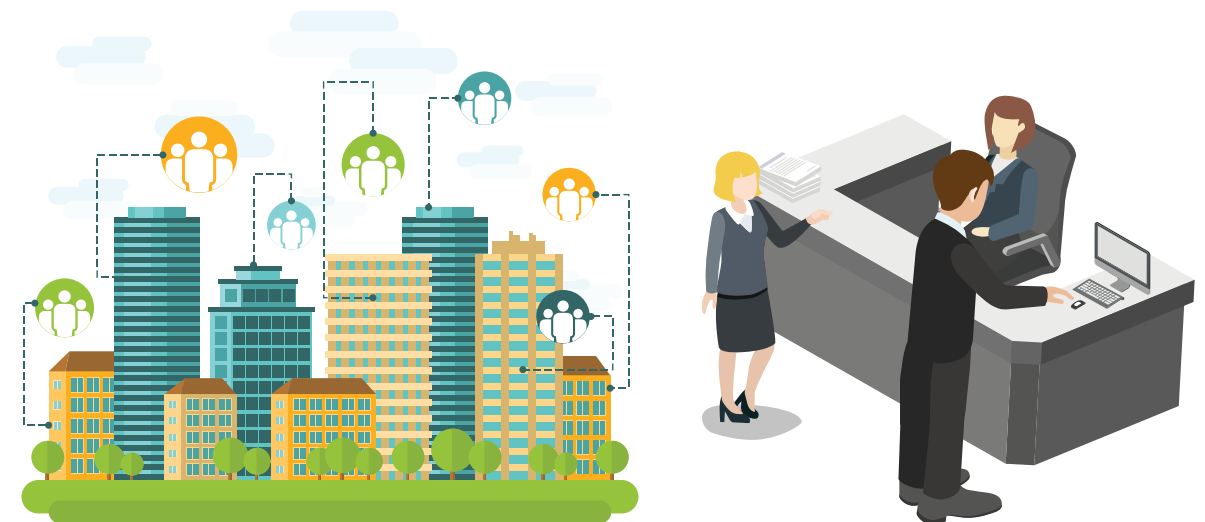
## Visitor Module

Visitor Module is a web-based management system that implements entry registration, exit registration, snapshot capturing, visitor quantity statistics, reservation management and shares information among registration sites. It is highly integrated with the access control system and elevator control system. It is generally used at reception desks and gates of enterprises to manage visitors.



## Multi-point Visitor Registration Management based on Web

Supports setting of visitor registration points, multi-point registration visitor management, and mutual sharing of a publicized management database.



## E-mail and SMS Notification Functions

During visitor registration, in case of overtime visits, visitor registration, overtime visitor registration, visitor checking out, monitoring lists, the system will deliver e-mail or SMS notification to visitors, recipients or managers in registration site. SMS and e-mail templates support customization, templates with different contents, delivery rules and recipients according to conditions can be customized. If it is set to deliver in day of visit, all notifications will be delivered to the specific recipients on specific time.

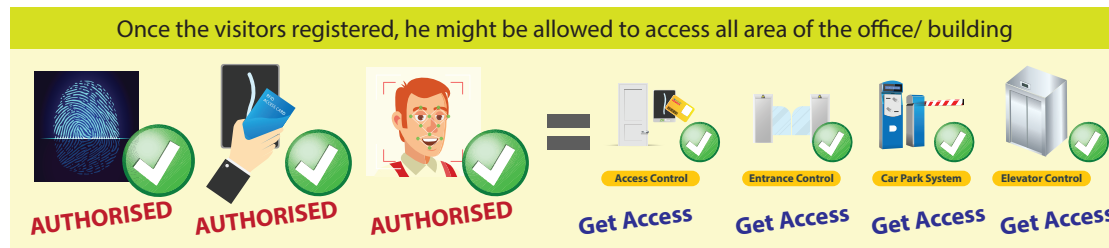


If there is an overtime visit, the system will deliver e-mail or SMS notification to visitors, recipients or managers in registration sites.



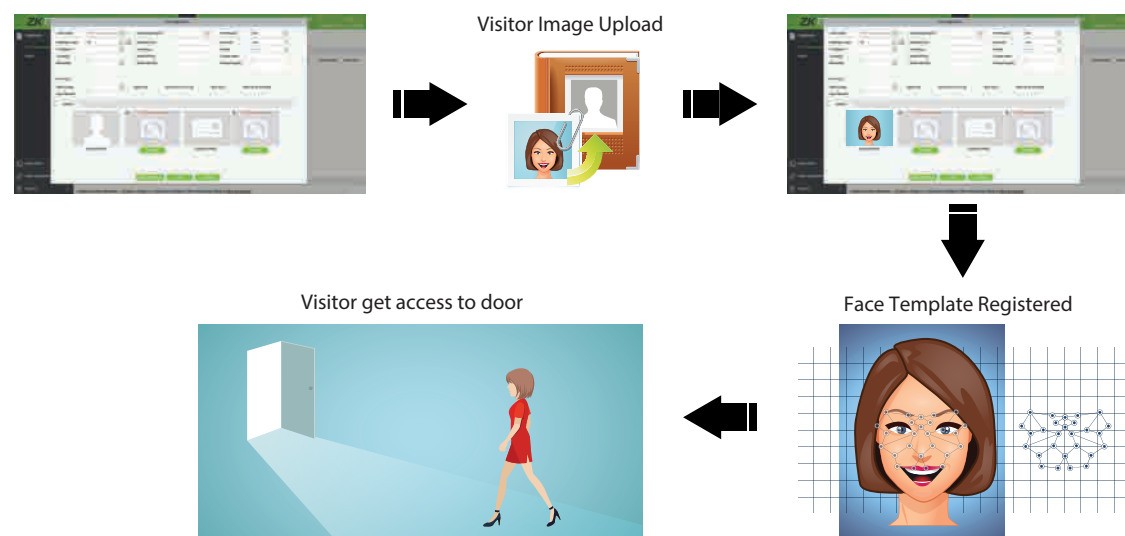
## Visitor Management Process

Employees can help the visitors to make reserved registration, successful reservation information will be delivered via email or SMS to notify recipients, visitors and registration managers etc. Visitor registration can also be done by identity card registration (OCR or ID Reader), signature, photo capturing, passport capturing or car information registration etc. in order to enhance the safety level. Visitor authority supports automatic distribution of recipient department authority group according to visitor's location. Also, copying function enables users to select needed visitor information and copy to new registration interfaces, including recipient information, reasons for visit, corporate information, authority information etc., which can bring convenience and save time to group visit registration. After successful registration, visitors may have access to designated areas with visitor cards or visitor receipts. It supports multiple verification modes including card, password, finger print, QR code etc. After visit, visitors may return cards in the registration site for checking out.



## Visitor Module Supports Visible Light Facial Recognition

Client can use the photo capture function in the visitor registration page to register visible light facial templates, and share with all Visible Light Facial Recognition Terminals.



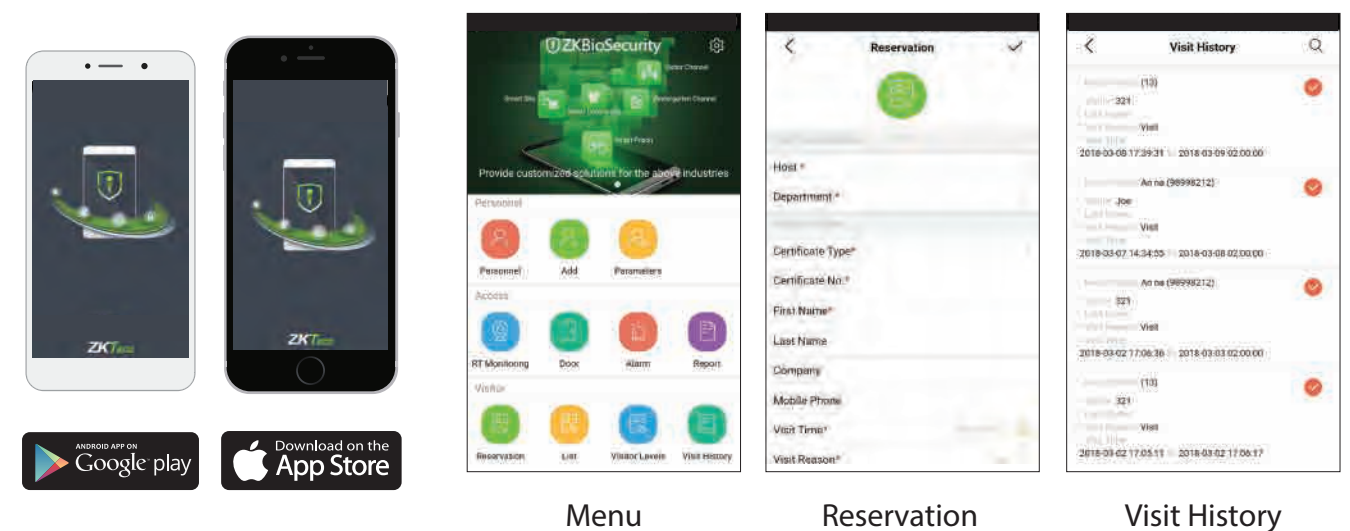
## Report

Visitor module can summary useful information of visitor last visited location and visitor history.



## Support iPhone and Android APP

Offers mobile visitor reservation and registration functions, including names, phone numbers, timeslots of visits. Users may also review reserved visitors' status and detailed visitor records with ZKBioSecurity App. anytime.



\* Users may download ZKBioSecurity App. via App Store on iOS or Google Play Store on Android

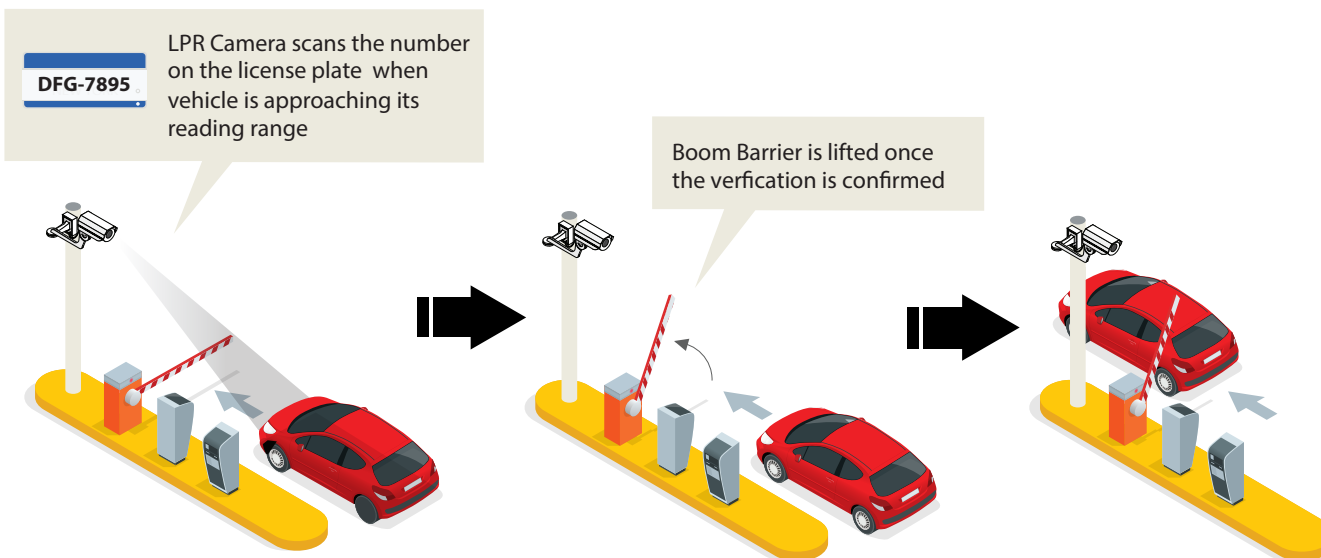
## Parking Management

Automatic and intelligent vehicle management effectively and accurately monitors and manages vehicles at all exits and entrances via different criteria.



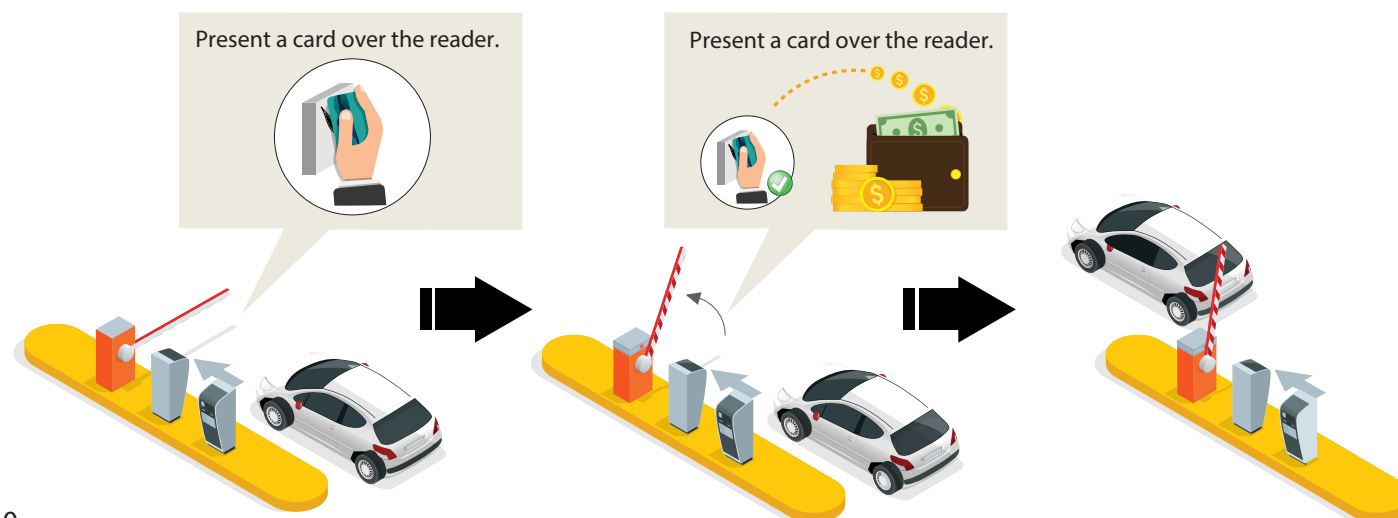
## Automatic License Plates Verification (with LPR camera)

LPR technology is an application of computer video image recognition technology in license plate identification area. Its operation starts when the vehicle is located at the entrance of the parking lot, the LPR camera will scan on the license plate characters, and its recognition technology will identify the license plate number, color and other information. If the number on the license plate is valid, the car park barrier will lift for access, otherwise, no access will be allowed.



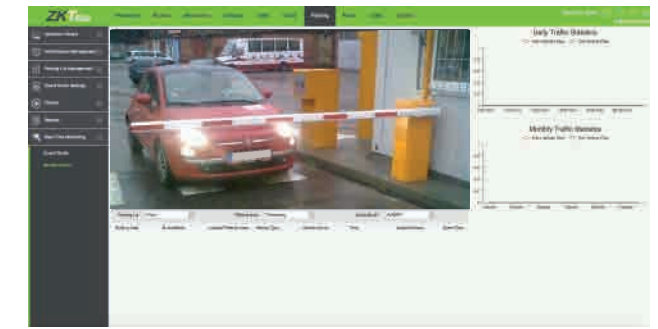
## Payment and Charge Management

ZKBioSecurity offers an advanced option for users to pay on their parking when they are entering into the car park. Users may simply present cards at the entrance, and pay charges when leaving the car park.



## Real Time Parking Lot Monitoring

It provides an additional function for administrators to have a real time monitoring in the monitor room, you can check video images and entrance and exit information of all guard booths in all parking lots.



## Supports Parking Offline Mode

Offline mode refers to that the LPR terminal itself can save templates and finish the authorization process even in offline environment, the LPR system can still operate smoothly and fine. Meanwhile, under the offline environment, the templates and data cannot be updated.

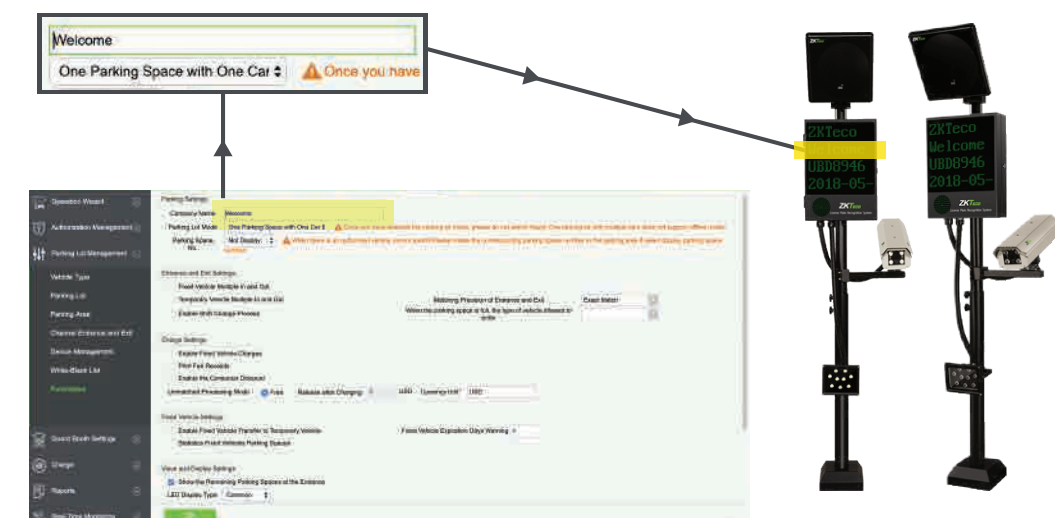
### Offline Mode

People and vehicle can get access without network



## Supports Display Company Name in LED Screen

User can set their company names displayed on the LED screen on the LPR terminal, ZKBioSecurity Parking module has a very user-friendly GUI to let users set names.





## Report

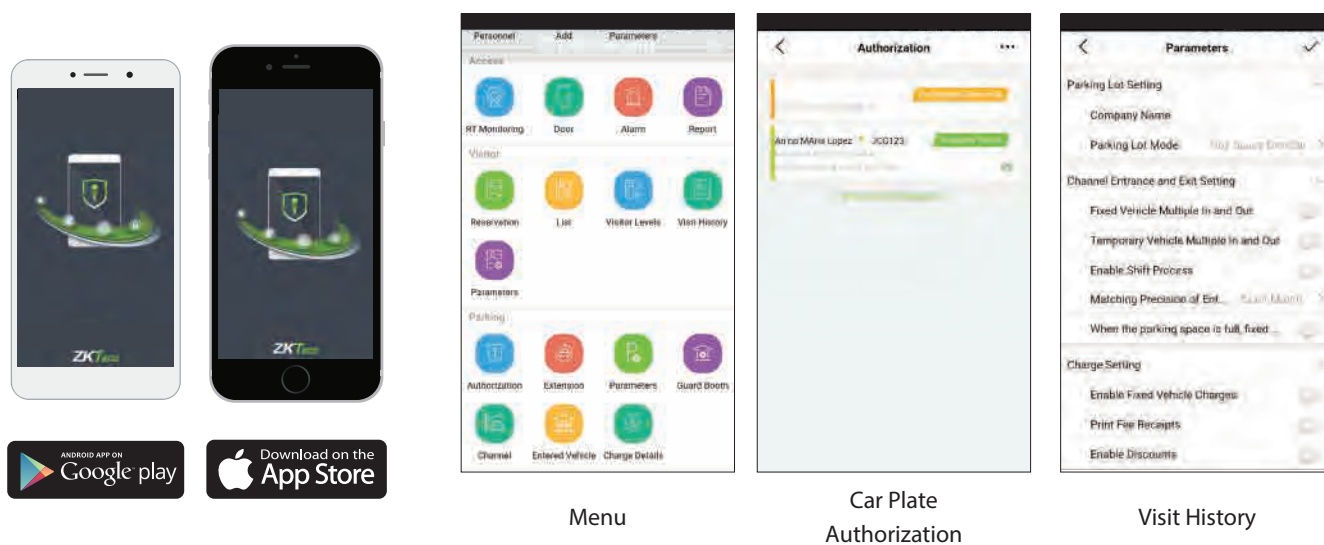
As an utilized LPR parking management system, the ZKBioSecurity parking module provides numbers of detail report, license plate report, charge details, vehicles in parking lot, daily and monthly reports, etc.



## Support iPhone and Android APP

Provides mobile remote car access authority distribution function (designated time/date/entrance & exit), details of overtime parked cars can be reviewed in reports for prompt re-distribution / update of valid parking periods. Users may also define monthly parking cars as fixed vehicles or hourly parking cars with temporary vehicles for the convenience of the setting of charges and effective periods.

License Plate Recognition (LPR) enables license plate image capturing, users may review all details of present cars' parking status and car parking history in mobile device.



\* Users may download ZKBioSecurity App. via App Store on iOS or Google Play Store on Android

## Guard Patrol Module

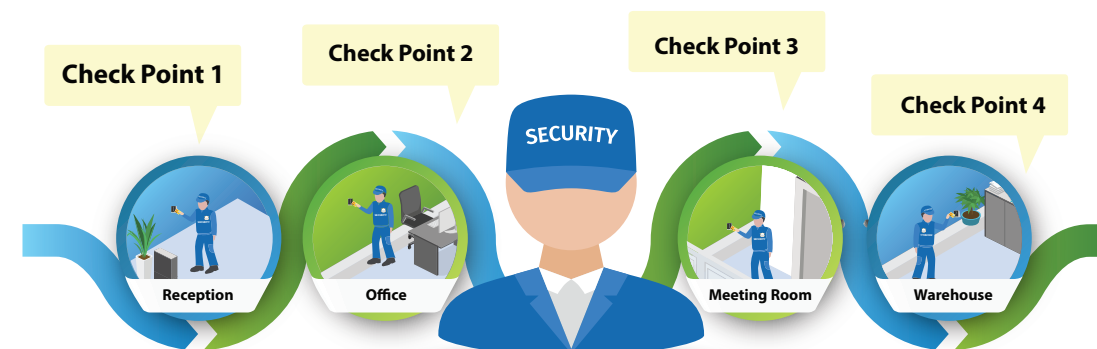
The Online Guard Patrol module is the new cost-effective way to accomplish guard patrol management. ZKBioSecurity can utilize the access control readers already in place as guard patrol check point readers. ZKBioSecurity terminals and readers boast biometric technology for added security. No additional equipment is required for the guard to carry.



## Management

Guard Patrol is an efficient module to manage your security guards completing all their patrols at the correct time. Our guard tour system uses the latest technology to allow you to accurately monitor the times of patrols and when key areas have been visited.

The system works by installing the access control at areas around the building to be checked. Security guards swipe their own smart card or other biometric authentication to these points to record the time visited. Using the existing access control and time attendance, it reduces costs and ensures patrol tasks are completed.



## Online with Access Control (Cost Effective)

The security guards have to identified their own checkpoints to officer performing the patrol to note any incidents or observations. Using the ZKTeco access control with the powerful software ZKBioSecurity, enterprise no longer need to install the traditional guard patrol system (Location Tag), administrators can cut cost on the security's budgets.



## Real-Time Patrol Monitoring and Check-Point Route

ZKBioSecurity provides the scheduled routes of the current day in the patrol plan. When the patrol security guards check-in based on the plan, the corresponding checkpoints in the patrol route will turn green. If the security guards don't check-in according to the plan, the checkpoints will turn red.

### Normal

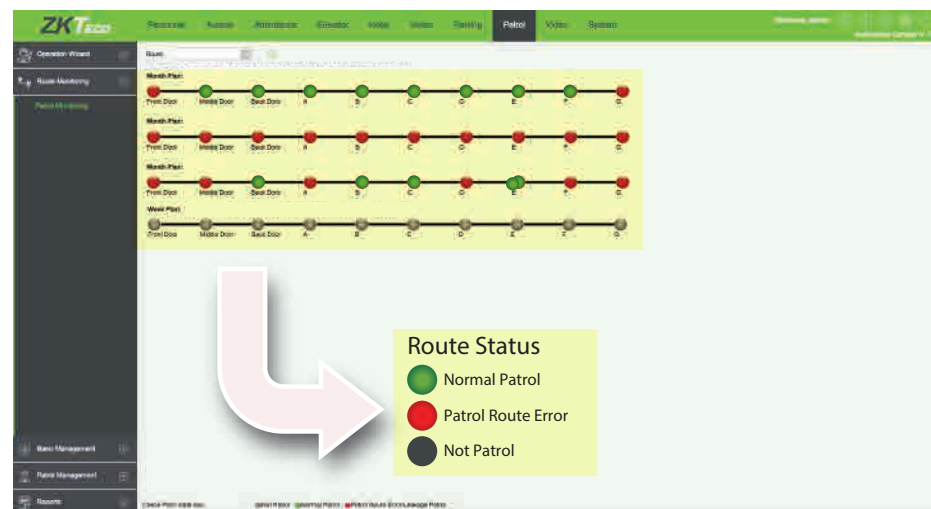
The patrol guard finished the patrol in the normal time segment and sequence.

### Patrol Route Error

The patrol guard finished the patrol in the normal time segment but in wrong route.

### Not Patrol

The patrol personnel did not finish the patrol in the normal segment, that is the patrol guard did not finish the patrol route.



## Report

In order to let administrators have a more detailed view of the patrol guard performance, the patrol module provides many useful reports, including all patrol transaction, patrol records, patrol route statistic, patrol personnel statistic.



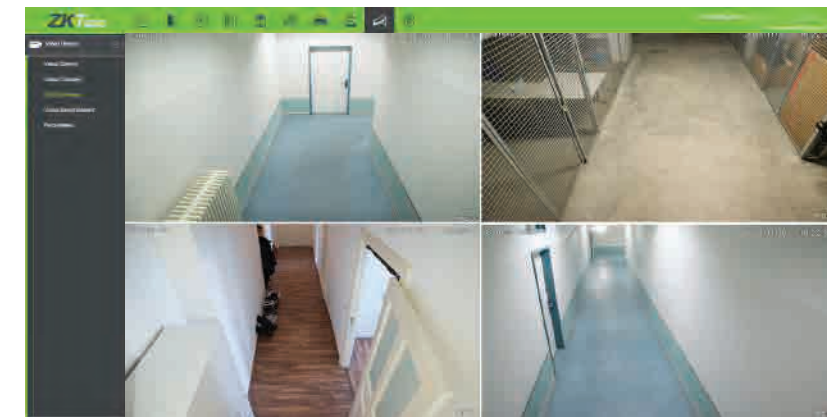
## Video Linkage

For high level security demand, a video surveillance management platform is essential to most of the premises. ZKBioSecurity provides a video linkage module which supports real time video and query video records, real time video pop-up alert when linkage event occurs. Moreover, this module can integrate with 3rd party cameras through private protocol and ONVIF. This module can also interact with other ZKBioSecurity module such as, access control, elevator control, visitor, patrol, parking, hotel.



## Video Preview

The video linkage module allows users to connect multi-camera channels for preview. It supports up to 16 channels viewing mode in single interface.

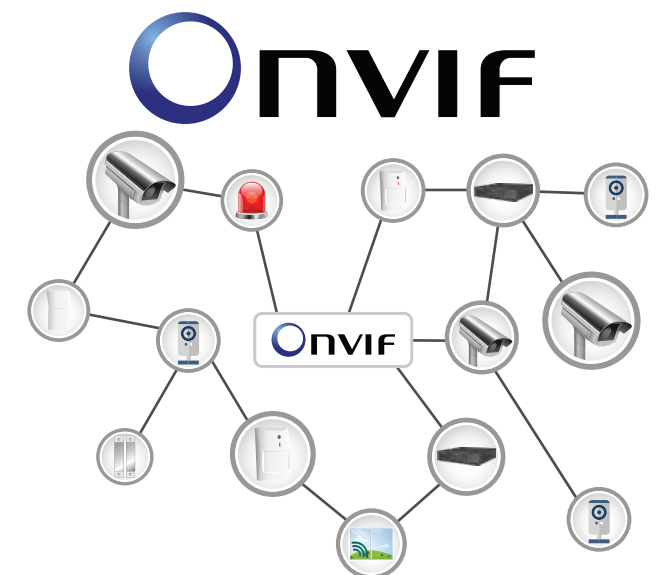


## Fully Integrate 3rd Party IPC/DVR/NVRs

Currently ZKBioSecurity software supports ZKVision (EZ, E, W series), GT/PT Series, Hikvision, Dahua, through private protocol integration, and using ONVIF to connect other cameras and NVRs.

## Supports ONVIF

ONVIF is an open industry standardized interface for IP-based physical security products, ZKBioSecurity is using ONVIF for most of the 3rd party cameras and NVRs integration to enlarge its extensive ability.



## Video Event Record

To maximize the working efficiency of the administrators, the video surveillance module provide detailed event records in terms of photos and videos listed accurate time and triggered location with playback.



# ZKBioSecurity's Report Templates



Personnel Management Summary Report @Personnel Module

ZKTECO Person													
Personnel ID	First Name	Last Name	Department Number	Department Name	Gender	Birthday	Password	Certificate Type	Certificate Number	Card Number	Email	Reservation Code	Mobile Phone
1	Jerry	Wang	1	General	Male	1980-04-23	1	1	TP443568	4461253	abwe@qwe.com	123456	59496464
2	Lucky	Tan	3	Development Department	Female	1992-12-08	2	3	784515	6155266	778@abc.com	123456	4425521
2640	Sherry	Yang	hotel	Hotel	Female	1997-12-01	2640	1	741741	1411237	555@qq.com	123456	145145145
3	Leo	Hou	4	Financial Department	Male	1998-12-22	3	1	23687	13271770	3232@qq.com	123456	34342543
4	Berry	Cao	1	General	Female	2007-12-05	4	4	745688QQWA	13592341	QWA@zzz.com	123456	74755468
5	Nicol	Ye	2	Marketing Department	Male	2017-01-10	5	1	32242311	13260079	3322@qq.com	123456	6645454
6	Amber	Lin	4	Financial Department	Female	2017-07-04	6	1	784525004	4628036	787878@eru.com	123456	44620545
7	Jacky	Xiang	1	General		2016-01-05	7	8	ees1213232	6323904	434@qq.com	123456	54243231
8	Glori	Liu	2	Marketing Department	Female	1995-12-05	8	1	433114354	6189166	967@abcd.com	123456	77545353
9	Lilian	Mei	3	Development Department	Female	1992-12-23	9	1	XS22030	9505930	8689@pp.com	123456	221112121

Access Report @Access Module

ZKTECO Total People 10						
Personnel ID	First Name	Last Name	Department	Card Number	Last Access Time	Last Access Reader
1	Jerry	Wang	General	4461253	2017-12-18 09:28:31	192.168.218.80-2-In
2	Lucky	Tan	Development Department	6155266	2017-12-18 09:27:12	192.168.218.80-1-In
2840	Sherry	Yang	Hotel	1411237	2017-12-18 09:55:52	192.168.218.80-1-In
3	Leo	Hou	Financial Department	13271770	2017-12-18 09:34:57	192.168.218.80-2-In
4	Berry	Cao	General	13592341	2017-12-18 09:55:58	192.168.218.80-1-In
5	Nicol	Ye	Marketing Department	13260079	2017-12-18 09:34:18	192.168.218.80-1-In
6	Amber	Lin	Financial Department	4628036	2017-12-18 09:25:29	192.168.218.80-1-In
7	Jacky	Xiang	General	6323964	2017-12-18 09:27:18	192.168.218.80-2-In
8	Glori	Liu	Marketing Department	6186166	2017-12-18 09:34:20	192.168.218.80-2-In
9	Lilian	Mei	Development Department	9505930	2017-12-18 09:27:22	192.168.218.80-1-In

All Access Transactions @Access Module

ZKTECO

All Transactions

Time: 2017-10-15 00:00:00 - 2017-12-15 23:59:59

Time	Device Name	Event Point	Event Description	Personnel ID	First Name	Last Name	Card Number	Department Name	Reader Name	Verification Mode	Area Name	Remark
2017-12-15 18:29:02	192.168.218.60	192.168.218.80-2	Background Verify Success	8	Amber	Lin	4628036	Financial Department	192.168.218.80-2-In	Only Card	Area Name	
2017-12-15 18:28:59	192.168.218.60	192.168.218.80-1	Background Verify Success	8	Amber	Lin	4628036	Financial Department	192.168.218.80-1-In	Only Card	Area Name	
2017-12-15 18:28:45	192.168.218.60	192.168.218.80-2	Background Verify Success	5	Nicol	Ye	13260079	Marketing Department	192.168.218.80-2-In	Only Card	Area Name	
2017-12-15 18:28:41	192.168.218.60	192.168.218.80-1	Background Verify Success	5	Nicol	Ye	13260079	Marketing Department	192.168.218.80-1-In	Only Card	Area Name	
2017-12-15 18:28:38	192.168.218.60	192.168.218.80-2	Background Verify Success	1	Jerry	Wang	4461253	General	192.168.218.80-2-In	Only Card	Area Name	
2017-12-15 18:28:35	192.168.218.60	192.168.218.80-1	Background Verify Success	1	Jerry	Wang	4461253	General	192.168.218.80-1-In	Only Card	Area Name	
2017-12-15 18:28:23	192.168.218.60	192.168.218.80-2	Background Verify Success	2940	Sherry	Yang	1411237	Hotel	192.168.218.80-2-In	Only Card	Area Name	
2017-12-15 18:28:20	192.168.218.60	192.168.218.80-1	Background Verify Success	2940	Sherry	Yang	1411237	Hotel	192.168.218.80-1-In	Only Card	Area Name	
2017-12-15 18:28:17	192.168.218.60	192.168.218.80-2	Background Verify Success	6	Lilian	Mei	9505930	Development Department	192.168.218.80-2-In	Only Card	Area Name	
2017-12-15 18:28:13	192.168.218.60	192.168.218.80-1	Background Verify Success	6	Lilian	Mei	9505930	Development Department	192.168.218.80-1-In	Only Card	Area Name	
2017-12-15 18:28:06	192.168.218.60	192.168.218.80-2	Background Verify Success	3	Leo	Hou	13271770	Financial Department	192.168.218.80-2-In	Only Card	Area Name	
2017-12-15 18:28:01	192.168.218.60	192.168.218.80-1	Background Verify Success	3	Leo	Hou	13271770	Financial Department	192.168.218.80-1-In	Only Card	Area Name	
2017-12-15 18:25:18	192.168.218.60	192.168.218.80-1	Remote Opening						Other	Other	Area Name	
2017-12-15 18:25:04	192.168.218.60	192.168.218.80-1	Remote Opening						Other	Other	Area Name	
2017-12-15 18:23:52	192.168.218.60	192.168.218.80-2	Background Verify Success	1	Jerry	Wang	4461253	General	192.168.218.80-2-In	Only Card	Area Name	
2017-12-15 18:23:40	192.168.218.60	192.168.218.80-1	Remote Opening						Other	Other	Area Name	
2017-12-15 18:23:26	192.168.218.60	192.168.218.80-1	Remote Opening						Other	Other	Area Name	
2017-12-15 18:23:11	192.168.218.60	192.168.218.80-2	Background Verify	1	Jerry	Wang	4461253	General	192.168.218.80-2-In	Only Card	Area Name	



Business Trip Report @Attendance Module

ZKTECO							
Business Trip							
Personnel ID	First Name	Last Name	Department Number	Department Name	Start Time	End Time	Operation Time
4	Berry	Cao	1	General	2017-12-15 16:37:27	2017-12-15 16:37:27	2017-12-15 16:37:31
5	Necol	Ye	2	Marketing Department	2017-12-18 11:42:28	2017-12-18 11:42:28	2017-12-18 11:42:51
8	Glori	Liu	2	Marketing Department	2017-12-18 11:42:55	2017-12-18 11:42:55	2017-12-18 11:43:08

Overtime Report @Attendance Module

ZKTECO							
Overtime							
Personnel ID	First Name	Last Name	Department Number	Department Name	OT Type	Start Time	Operation Time
3	Leo	Hou	4	Financial Department	Normal OT	2017-12-15 16:37:34	2017-12-15 16:37:37
5	Necol	Ye	2	Marketing Department	Normal OT	2017-12-18 11:44:03	2017-12-18 11:44:28

Daily Attendance Report @Attendance Module

ZKTECO							
Daily Attendance							
Personnel ID	First Name	Last Name	Department Number	Department Name	Record Date	Record Times	Punch Time
1	Jerry	Wang	1	General	2017-12-15	35	16:33:27;16:33:28;16:33:29;16:33:34;16:34:03;16:34:04;16:34:05;16:34:06;16:35:02;16:35:03;17:35:25;17:35:26;17:42:50;17:42:51;17:42:52;17:58:49;17:58:50;18:04:44;18:04:45;18:22:20;18:22:21;18:23:12;18:23:16;18:23:18;18:23:19;18:23:36;18:23:37;18:23:52;18:24:56;18:25:00;18:25:13;18:25:14;18:28:34;18:28:35;18:28:37;18:28:38;18:33:42;16:33:43;16:33:51;16:33:56;16:34:00;16:35:05;16:35:06;17:35:32;17:42:47;17:42:48;17:59:03;17:59:04;17:59:38;17:59:39;18:04:56;18:05:00;18:05:07;18:05:08;18:09:35;18:09:36;18:23:00;18:23:01;18:23:02;18:28:53;18:28:55;18:28:56;18:33:16;16:34:08;16:34:10;16:35:08;16:35:09;17:36:19;17:43:01;17:43:02;
2	Lucky	Tan	3	Development Department	2017-12-15	28	16:33:42;18:28:56
2040	Sherry	Yang	hotel	Hotel	2017-12-15	17	16:33:16;18:28:23



ZKTECO Leave Summary					
Personnel ID	First Name	Last Name	Department Number	Department Name	Leave Type Statistics
1	Jerry	Wang	1	General	Casual Leave(1) Marriage Leave(0) Maternity Leave(0) Sick Leave(0) Annual Leave(0) Bereavement Leave(0) Breastfeeding Leave(0) Custom (0)
5	Necol	Ye	2	Marketing Department	Casual Leave(0) Marriage Leave(0) Maternity Leave(0) Sick Leave(0) Annual Leave(1) Bereavement Leave(0) Breastfeeding Leave(0) Custom (0)
8	Lilian	Mei	3	Development Department	Casual Leave(0) Marriage Leave(0) Maternity Leave(0) Sick Leave(0) Annual Leave(0) Bereavement Leave(0) Breastfeeding Leave(1) Custom (0)
3	Leo	Hou	4	Financial Department	Casual Leave(0) Marriage Leave(1) Maternity Leave(0) Sick Leave(0) Annual Leave(0)

Created on: 2017-12-15 18:38:22  
Created from ZKTimeSecurity software. All rights reserved.

ZKTECO Leave							
Personnel ID	First Name	Last Name	Department Number	Department Name	Leave Type	Start Time	End Time
1	Jerry	Wang	1	General	Casual Leave	2017-12-15 16:36:07	2017-12-15 16:36:17
3	Leo	Hou	4	Financial Department	Marriage Leave	2017-12-15 18:38:48	2017-12-15 18:38:53
5	Necol	Ye	2	Marketing Department	Annual Leave	2017-12-15 16:36:19	2017-12-15 16:36:27
6	Amber	Lin	4	Financial Department	Sick Leave	2017-12-15 18:38:54	2017-12-15 18:39:00
9	Lilian	Mei	3	Development Department	Breastfeeding Leave	2017-12-15 18:39:02	2017-12-15 18:39:10

ZKTECO Shift					
Name	Number	Schedule Type	Unit	Cycle	Start Date
Day Shift	1	Regular Shift	Day	10	2017-12-15
Night	2	Regular Shift	Day	10	2017-12-18
Flexible	3	Flexible Shift	Day	10	2017-12-18
				Cycle Shift in one Month	
					Yes
					Yes
					Yes

ZKTECO Time Zone					
Name	Number	Timetable Type	Check-in Start Time	Check-in Time	Check-out Time
Normal Time	1	Normal Time Zone	08:00		18:00
Flexible Timetable	2	Flexible Timetable	09:00		18:00
Day Time	3	Normal Time Zone	08:00	08:30	18:00
Test	T4	Normal Time Zone	20:00	20:30	23:59



Elevator control report @Elevator Module

Time: 2017-09-18 00:00 - 2017-12-18 23:59:59									
All Transactions									
ZKTECO									
Time	Device	Event Point	Event Description	Personnel ID	First Name	Last Name	Card Number	Department	Reader Name
2017-12-15 10:35:43	192.168.218.65	192.168.218.65-8	Normal Punch Open	3	Leo	Hou	13260078	General	192.168.218.65-Reader
2017-12-15 10:35:43	192.168.218.65	192.168.218.65-5	Normal Punch Open	3	Leo	Hou	13260079	General	192.168.218.65-Reader
2017-12-15 10:35:43	192.168.218.65	192.168.218.65-9	Normal Punch Open	3	Leo	Hou	13260079	General	192.168.218.65-Reader
2017-12-15 10:35:39	192.168.218.65	192.168.218.65-1	Normal Punch Open	1	Jerry	Wang	9505930	General	192.168.218.65-Reader
2017-12-15 10:35:39	192.168.218.65	192.168.218.65-4	Normal Punch Open	1	Jerry	Wang	9505930	General	192.168.218.65-Reader
2017-12-15 10:35:39	192.168.218.65	192.168.218.65-3	Normal Punch Open	1	Jerry	Wang	9505930	General	192.168.218.65-Reader
2017-12-15 10:35:39	192.168.218.65	192.168.218.65-2	Normal Punch Open	1	Jerry	Wang	9505930	General	192.168.218.65-Reader
2017-12-15 10:35:36	192.168.218.65	192.168.218.65-8	Normal Punch Open	2	Lucky	Tan	13271770	General	192.168.218.65-Reader
2017-12-15 10:35:36	192.168.218.65	192.168.218.65-10	Normal Punch Open	2	Lucky	Tan	13271770	General	192.168.218.65-Reader
2017-12-15 10:35:29	192.168.218.65	192.168.218.65-9	Normal Punch Open	2	Lucky	Tan	13271770	General	192.168.218.65-Reader
2017-12-15 10:35:30	192.168.218.65	192.168.218.65-7	Normal Punch Open	2	Lucky	Tan	13271770	General	192.168.218.65-Reader
2017-12-15 10:35:31	192.168.218.65	192.168.218.65-5	Normal Punch Open	3940	Sherry	Yang	4461253	General	192.168.218.65-Reader
2017-12-15 10:35:31	192.168.218.65	192.168.218.65-8	Normal Punch Open	3940	Sherry	Yang	4461253	General	192.168.218.65-Reader
2017-12-15 10:35:31	192.168.218.65	192.168.218.65-7	Normal Punch Open	3940	Sherry	Yang	4461253	General	192.168.218.65-Reader
2017-12-15 10:35:31	192.168.218.65	192.168.218.65-5	Normal Punch Open	3940	Sherry	Yang	4461253	General	192.168.218.65-Reader
2017-12-15 10:35:31	192.168.218.65	192.168.218.65-8	Normal Punch Open	3940	Sherry	Yang	4461253	General	192.168.218.65-Reader
2017-12-15 10:35:27	192.168.218.65	192.168.218.65-8	Normal Punch Open	3940	Sherry	Yang	4461253	General	192.168.218.65-Reader
2017-12-15 10:35:27	192.168.218.65	192.168.218.65-8	Normal Punch Open	3940	Sherry	Yang	4461253	General	192.168.218.65-Reader

Created on: 2017-12-15 15:01:27

Created from: ZKAccessControl software. All rights reserved.

Guest Check-in Report @Hotel Module

ZKTECO									
Guest Checkin Report									
First Name	Last Name	Document Type	Document No.	Card Number	Check-In Time	Check-Out Time	Checkin Type	Room Name	Room Type
Maryan	Liu	ID	44443333	4117649102	2017-12-15 14:42:09	2017-12-15 15:18:49	Daily Rate Room	A1101	A
Carian	Xie	Passport	332454	4117858142	2017-12-15 14:51:15	2017-12-15 15:14:20	Daily Rate Room	B1103	A
Lucy	Feng	Passport	232145523	301873533	2017-12-15 14:43:38	2017-12-15 15:13:52	Daily Rate Room	A1102	A
Lucy	Feng	Passport	232145523	301873533	2017-12-15 15:13:52	2017-12-15 15:19:06	Daily Rate Room	B1105	A
Hook		ID	5677566	4117882494	2017-12-15 14:45:37	2017-12-15 14:50:08	Daily Rate Room	B1102	A
Maryan	Liu	ID	44443333	4117649102	2017-12-15 14:42:09	2017-12-15 15:18:49	Daily Rate Room	A1101	A
Bruno	Ke	Driver License	22322123	4117882494	2017-12-15 14:51:15	2017-12-15 15:14:20	Daily Rate Room	B1103	A

Visitor History Record @Visitor Module

ZKTECO									
Visitor History Record									
Visitor Code	First Name	Last Name	Company	Visit Reason	Host Number	Host First Name	Host Last Name	Visit Status	Card Number
800000011	Monny	Fang	Google	Visit	7	Jacky	Xiang	Check-Out	4189168
800000010	Tommy	Qi	ZKTeCo-Th	Visit	8	Anber	Lin	Check-Out	8323884
800000009	Elian	Peng	ZKTeCo-Eu	Visit	5	Nicol	Ye	Check-Out	13262941
800000008	Soura	Viny	Essi	Visit	4	Berry	Cao	Check-Out	1411237
800000007	Monic	Wu	ZKTECO	Visit	1	Jerry	Wang	Check-Out	4628026
800000006	Bella	Yu		Visit	2940	Sherry	Yang	Check-Out	4461253
800000005	Bill	Fang		Visit	3	Leo	Hou	Check-Out	9505930
800000004	Tom	Lee		Visit	2	Lucky	Tan	Check-Out	13260079
800000003	Shapin	Chen		Visit	3	Leo	Hou	Check-Out	13260079
800000002	Jeey	Leang		Visit	2	Lucky	Tan	Check-Out	9505930
800000001	Mary	Huang		Visit	3940	Sherry	Yang	Check-Out	4461253

Created on: 2017-12-15 15:01:27

Created from: ZKAccessControl software. All rights reserved.

Patrol Guard Transaction Record @Patrol Module

ZKTECO											
All Transactions											
Time: 2017-09-15 00:00 - 2017-12-15 23:59:59											
Time	Device Name	Personnel ID	First Name	Last Name	Card Number	Device Module	Route Name	Checkpoint	Verification Mode	Area Name	Remark
2017-12-15 13:53:51	192.168.218.60	8	Glori	Liu	8189168	Access	Route1	checkpoint1	Only Card	Area Name	
2017-12-15 13:53:51	192.168.218.60	8	Glori	Liu	8189168	Access	Route1	checkpoint2	Only Card	Area Name	
2017-12-15 13:53:49	192.168.218.60	8	Glori	Liu	8189168	Access	Route1	checkpoint2	Only Card	Area Name	
2017-12-15 13:53:48	192.168.218.60	8	Glori	Liu	8189168	Access	Route1	checkpoint1	Only Card	Area Name	
2017-12-15 13:53:46	192.168.218.60	7	Jacky	Xiang	8323984	Access	Route1	checkpoint2	Only Card	Area Name	
2017-12-15 13:53:46	192.168.218.60	7	Jacky	Xiang	8323984	Access	Route1	checkpoint1	Only Card	Area Name	
2017-12-16 11:54:18	192.168.218.60	8	Glori	Liu	8189168	Access	route1	checkpoint1	Only Card	Area Name	
2017-12-16 11:54:17	192.168.218.60	8	Glori	Liu	8189168	Access	route1	checkpoint2	Only Card	Area Name	
2017-12-15 11:54:15	192.168.218.60	7	Jacky	Xiang	8323984	Access	route1	checkpoint2	Only Card	Area Name	
2017-12-15 11:54:14	192.168.218.60	7	Jacky	Xiang	8323984	Access	route1	checkpoint1	Only Card	Area Name	
2017-12-16 11:54:10	192.168.218.60	5	Nicol	Ye	13260079	Access	route1	checkpoint2	Only Card	Area Name	
2017-12-16 11:54:10	192.168.218.60	5	Nicol	Ye	13260079	Access	route1	checkpoint1	Only Card	Area Name	
2017-12-15 11:54:08	192.168.218.60	2	Lucky	Tan	8155268	Access	route1	checkpoint1	Only Card	Area Name	
2017-12-16 11:54:07	192.168.218.60	2	Lucky	Tan	8155268	Access	route1	checkpoint2	Only Card	Area Name	
2017-12-16 11:53:48	192.168.218.60	2	Lucky	Tan	8155268	Access	route1	checkpoint1	Only Card	Area Name	
2017-12-16 11:53:47	192.168.218.60	2	Lucky	Tan	8155268	Access	route1	checkpoint2	Only Card	Area Name	
2017-12-16 11:53:44	192.168.218.60	2	Lucky	Tan	8155268	Access	route1	checkpoint1	Only Card	Area Name	
2017-12-15 11:53:44	192.168.218.60	2	Lucky	Tan	8155268	Access	route1	checkpoint2	Only Card	Area Name	
Accessed: 2017-12-15 18:45:30											



Partrol Record by Day @Patrol Module

ZKTECO

Patrol Records Today

Time	Device Name	Personnel ID	First Name	Last Name	Card Number	Device Module	Route Name	Checkpoint	Verification Mode	Area Name	Remark
2017-12-15 13:53:51	192.168.218.80	8	Glori	Liu	8189188	Access	Route1	checkpoint11	Only Card	Area Name	
2017-12-15 13:53:51	192.168.218.80	8	Glori	Liu	8189188	Access	Route1	checkpoint2	Only Card	Area Name	
2017-12-15 13:53:49	192.168.218.80	8	Glori	Liu	8189188	Access	Route1	checkpoint2	Only Card	Area Name	
2017-12-15 13:53:48	192.168.218.80	8	Glori	Liu	8189188	Access	Route1	checkpoint11	Only Card	Area Name	
2017-12-15 13:53:46	192.168.218.80	7	Jacky	Xiang	8323884	Access	Route1	checkpoint2	Only Card	Area Name	
2017-12-15 13:53:48	192.168.218.80	7	Jacky	Xiang	8323884	Access	Route1	checkpoint11	Only Card	Area Name	
2017-12-15 11:54:18	192.168.218.80	8	Glori	Liu	8189188	Access	route1	checkpoint11	Only Card	Area Name	
2017-12-15 11:54:17	192.168.218.80	8	Glori	Liu	8189188	Access	route1	checkpoint2	Only Card	Area Name	
2017-12-15 11:54:15	192.168.218.80	7	Jacky	Xiang	8323884	Access	route1	checkpoint2	Only Card	Area Name	
2017-12-15 11:54:14	192.168.218.80	7	Jacky	Xiang	8323884	Access	route1	checkpoint11	Only Card	Area Name	
2017-12-15 11:54:10	192.168.218.80	5	Nicol	Ye	13260079	Access	route1	checkpoint2	Only Card	Area Name	
2017-12-15 11:54:10	192.168.218.80	5	Nicol	Ye	13260079	Access	route1	checkpoint11	Only Card	Area Name	
2017-12-15 11:54:08	192.168.218.80	2	Lucky	Tan	8155288	Access	route1	checkpoint11	Only Card	Area Name	
2017-12-15 11:54:07	192.168.218.80	2	Lucky	Tan	8155288	Access	route1	checkpoint2	Only Card	Area Name	
2017-12-15 11:53:48	192.168.218.80	2	Lucky	Tan	8155288	Access	route1	checkpoint11	Only Card	Area Name	
2017-12-15 11:53:47	192.168.218.80	2	Lucky	Tan	8155288	Access	route1	checkpoint2	Only Card	Area Name	
2017-12-15 11:53:44	192.168.218.80	2	Lucky	Tan	8155288	Access	route1	checkpoint11	Only Card	Area Name	
2017-12-15 11:53:43	192.168.218.80	2	Lucky	Tan	8155288	Access	route1	checkpoint2	Only Card	Area Name	

Created on: 2017-12-15 14:48:48  
Created from ZKBioSecurity Software. All rights reserved.

1/25

Operation Log Record @System Module

ZKTECO

Operation Log

Operation User	Operation Time	Operation IP	Module	Operating Object	Operation Type	Operation Content	Result
admin	2017-12-18 15:08:35	127.0.0.1	Visitor	Visitor	Export	Export	Succeed
admin	2017-12-18 15:03:40	127.0.0.1	Elevator	Access Rights By Personnel	Export	Export	Succeed
admin	2017-12-18 15:03:17	127.0.0.1	Elevator	Access Rights By Floor	Export	Export	Succeed
admin	2017-12-18 15:02:58	127.0.0.1	Elevator	All Exception Events	Export	Export	Succeed
admin	2017-12-18 15:01:27	127.0.0.1	Elevator	All Transactions	Export	Export	Succeed
admin	2017-12-18 14:25:34	127.0.0.1	Attendance	Appended Receipt	Export	Export	Succeed
admin	2017-12-18 14:24:41	127.0.0.1	Attendance	Leave	Export	Export	Succeed
admin	2017-12-18 14:24:05	127.0.0.1	Attendance	Leave	Export	Export	Succeed
admin	2017-12-18 14:23:45	127.0.0.1	Attendance	Business Trip	Export	Export	Succeed
admin	2017-12-18 14:23:25	127.0.0.1	Attendance	Go Out	Export	Export	Succeed
admin	2017-12-18 14:22:26	127.0.0.1	Attendance	Overtime	Export	Export	Succeed
admin	2017-12-18 14:13:28	127.0.0.1	Attendance	Overtime	Export	Export	Succeed
admin	2017-12-18 14:06:58	127.0.0.1	Attendance	Adjust and Append	Export	Export	Succeed
admin	2017-12-18 14:04:21	127.0.0.1	Attendance	Adjust Shift	Export	Export	Succeed
admin	2017-12-18 14:02:21	127.0.0.1	Attendance	Adjust Shift	New	5	Succeed
admin	2017-12-18 14:00:27	127.0.0.1	Attendance	Adjust Shift	New	4:3	Succeed
admin	2017-12-18 13:56:27	127.0.0.1	Attendance	Adjust Shift	New	3	Succeed
admin	2017-12-18 13:55:40	127.0.0.1	Attendance	Adjust and Append	New	3:3	Succeed

Created on: 2017-12-18 15:07:23  
Created from ZKBioSecurity Software. All rights reserved.

1/25





Your Trusted AI Biometric Identification Technology



V5.1 2019.03.14

ZKTECO CO.,LTD.

[www.zkteco.com](http://www.zkteco.com)

E-mail: [sales@zkteco.com](mailto:sales@zkteco.com)



© Copyright 2019 ZKTECO CO., LTD. All rights reserved.