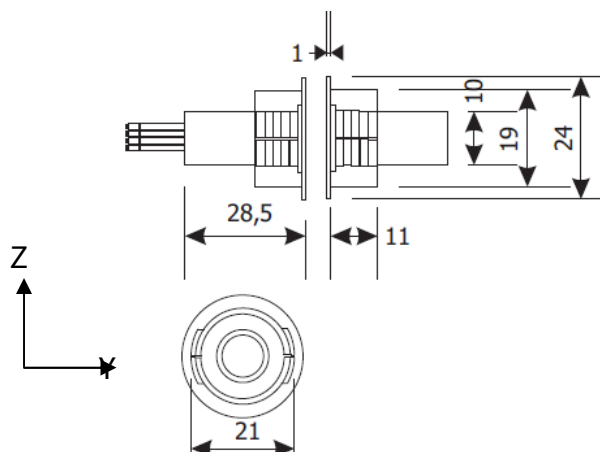
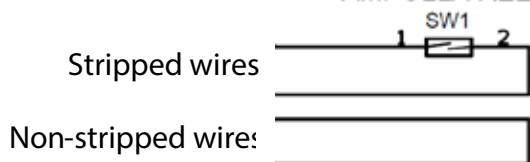


## PRODUCT

# CTI122



AMPOLLA REED



Approach and removal distances for different axes ( mm)			
Axes	Material	Non Ferromagnetic	Ferromagnetic
Y	Approach	20 ±2	12 ±2
	removal	30 ±3	25 ±3
Z	Approach	±12 ±2 (*)	±10 ±2 (*)
	removal	±18 ±3 (*)	±16 ±3 (*)

(\*) At nominal distance Y = 5mm

## Technical

Material/Colour: ABS/White  
 Dimension REED: 28,5x20 mm  
 Dimension MAGNET: 28,5x20 mm  
 Tmin/max: -25/+60°C  
 Wiring: White cable with 4 x 0.22mmq output wires –30 cm  
 Certificate: EN50131-2-6 Grade 2 Class IV  
 Certificate IMQ: CA12.01244

Flush fitting contact with ABS housing.  
 Note: suitable for ferromagnetic surfaces.  
 Drilling diameter 20mm, depth 29mm  
 Where is possible Y=5mm mounting gap is recommended.

### EXAMPLES OF OTHER MODELS:

CTI122CA  
 CTI122MACA3  
 CTI122 047047  
 CTI122 015022

For other models refer to the interpretation diagram below.

## Electrical

(passive component, maximum value)

Form A contact: N.C. With magnet within:  
 20mm – Non Ferromagnetic  
 10mm - Ferromagnetic

Pmax: 10VA  
 Vmax: 60Vdc; 42,2Vac peak  
 Imax: 0.50 A  
 R initial max: R=0.1ohm  
 R insulation: R=10<sup>12</sup> ohm  
 MTBF n° of operations: 10<sup>8</sup>

CTI122 MA CA xx yyy zzz

- \_ Optional: balancing resistor in parallel with the reed from 1k ohm (010) to 47k ohm (470)
- \_ Optional: balancing resistor in series with the reed from 1k ohm (010) to 47k ohm (470)
- \_ Optional: cable length > 1 m (from 2 to 99 m)
- \_ Optional: 4 wire further wrapped in sheath (cable), 1m length
- \_ Optional: colour brown
- \_ Colour white, 4 wire connection, section 0.22sqmm, white, 30cm length