

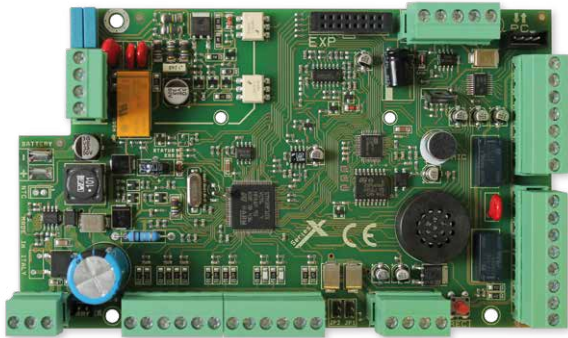
CONTROL PANELS

XSeries

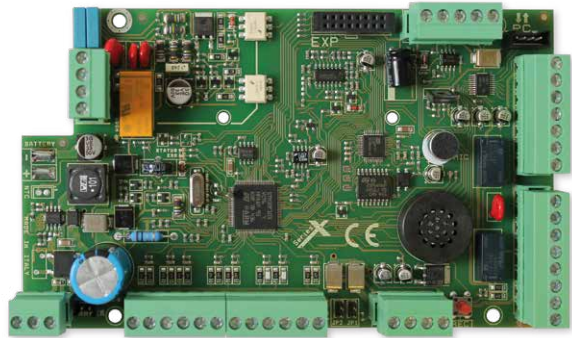
EN 50131 / GRADE 2 / CLASS 2



X824 | **8 - 24 zones**
split double, triple EOL
+ 2 zones for each keypad* (max 8 zones)



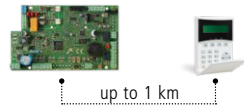
X864 | **8 - 64 zones**
double, triple EOL



X412 | **4 - 12 zones**
split double, triple EOL
+ 2 zones for each keypad* (max 4 zones)



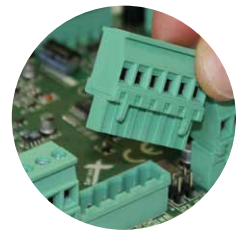
- GPRS/3G module
- IP module
- PSTN on board
- BUS line (4 wires) RS485
- Voice support
- Hybrid system (wired and wireless input)



CMS multiformat



Voice managing

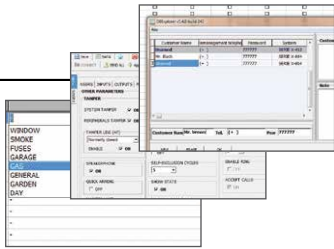


Clamps removable (X824-X864)



iOS/Android APP
AMCMANAGER





Settable by PC



The **X Series** are security control panels for building protection; hybrid system (wired and wireless input); EN 50131, Grade 2, Class 2 approved. The control panel has audio support on board and is equipped of 4/8 zones, expandable to 16/64. It is possible to obtain more zones by double and triple EOL split line (X412-X824). X Series are able to notify one or more situations of ALARM, ROBBERY, TAMPERING and TROUBLE with different carriers:

- **PSTN LINE on board** (voice call, Contact ID, SIA fsk, etc.)
- **GPRS/3G module** (voice call, SMS, Contact ID, DC09 IP protocol for Contact ID and SIA IP)
- **IP module** (DC09 IP protocol for Contact ID and SIA IP)



The panel can be controlled by the App AMC MANAGER (iOS / Android) with IP module and/or GPRS / 3G module. The programming can be made with keypad and/or PC software. The programming with software can be made remotely with IP module and/or GPRS / 3G module.

Technical Features	X412	X824	X864
ZONES	4 - 12 zones split double, triple EOL +2 zones for each keypad* (max 4 zones)	8 - 24 zones split double, triple EOL +2 zones for each keypad* (max 8 zones)	8 - 64 zones double, triple EOL
WIRELESS ZONES	64 zones	64 zones	64 zones
OUTPUTS	5 on board - expandable to 8 (with expansions or keypads)	5 on board - expandable to 8 (with expansions or keypads)	5 on board - expandable to 17 (with expansions or keypads)
USER CODE / TAG / REMOTE	32 users	32 users	64 users
AREAS	4	4	8
GROUPS	4	4	4
KEYPAD	4	4	8
TAG READER	4	4	8
LOG EVENTS	1000	1000	1000
PHONE NUMBERS	8 for SMS and private calls + 8 for CMS	8 for SMS and private calls + 8 for CMS	8 for SMS and private calls + 8 for CMS
CARRIERS	PSTN on board, GPRS/3G module, IP module	PSTN on board, GPRS/3G module, IP module	PSTN on board, GPRS/3G module, IP module
REMOTE MANAGEMENT IP - GPRS/3G	by App (iOS - Android)	by App (iOS - Android)	by App (iOS - Android)
REMOTE PROGRAMMING IP - GPRS/3G	by PC software	by PC software	by PC software
TIMERS	4 per day week	4 per day week	8 per day week

* Keypads with zones are Unika, K-lcd Blue, K-lcd Blue Tag, K-lcd Light Plus