



PARADOX M25

Beauty and a Beast

Hybrid Head Unit - Security Video and Access Control

Paradox Dealer Portal: paradoxdealer.com

The M25, a variant of the Paradox M Head units, is a versatile and powerful wireless/wired hybrid compact head unit. The wireless section uses Gaussian Frequency Shift Keying (GFSK) technology, offered in both 868 MHz and 914 MHz bands. It employs advanced frequency and encryption hopping to protect against unauthorized access, ensuring data security and an ultra-fast connection.

Powerful yet ultra-small and compact, the M25 is ideal for medium-sized homes, businesses, and large apartments. Its sleek design allows it to be installed anywhere, secured and hidden.

The M25 provides enhanced, trusted security with true direct-connect, ensuring it remains constantly online with supervision. With direct reporting independent of cloud or third-party points of failure, it supports up to four simultaneous supervised connections to IPC10 IP and its variants receivers. Unlike cloud-dependent systems, the M system's powerful communication enables direct monitoring without relying on the cloud, reducing potential points of failure.

The M25 programmable output is activated through manual settings, temperature triggers, or system events.

The system is expandable with M wireless, Ethernet, or hard-wired security devices via wireless expanders. It is ready for integration with video monitoring, verification, and access control (to be released in 2025).

The M25 utilizes Paradox fourth-generation cloud services with the Paradox identifier ecosystem for

secured, authenticated, and fast system access, together with the BlueEye mobile application, IPC10 receiver(s), and the Service Dealers/Companies Portal. The ecosystem verifies user identity through two-way authentication for increased security.

The system offers ultra-fast and easy installation using a single Cat6 to RJ45 cable for both PoE and Ethernet, eliminating the need for a separate power supply or additional wiring, thereby saving valuable time and effort. Built-in Wi-Fi can be used as the primary or backup channel, while LTE provides a third communication channel for enhanced redundancy and reliability.

Wireless nodes or Ethernet extensions can be added using the unique, intuitive auto-learn feature of Paradox. For pre-installation preparation, installers can scan QR codes or manually enter the serial number, ensuring a fast and efficient installation process that saves valuable time.

Programming is powerful and simple, with a user-friendly interface and application-based configuration or PC software.

All wireless modules connected to the M25 console are fully supervised and upgradable either over the air (for wireless devices) or through Ethernet (for network devices) as well as built-in temperature monitoring.

The M25 is with CE, FCC, ETL - EN 50131-1, EN 50131-3, EN 50131-6, EN 50131-10, EN 50136-1, EN 50136-2, Grade 2, and Class II.

M25 Console Feature Details

► Extremely Versatile:

Supports wireless, wired, and Ethernet expansions. All system devices, including wireless devices, are remotely upgradable. The system is fully scalable, allowing future upgrades to integrate video monitoring and access control. Supports easy backup and system restoration through the application, simplifying panel replacements.

► Easy Installation:

With one-wire Ethernet with PoE, fast auto-learn for wireless and Ethernet devices, and a user-friendly interface, the M25 is time-saving, easy, and simple to install and service.

► Latest Wireless Technology:

Using Gaussian Frequency Shift Keying (GFSK) technology with encryption and frequency hopping, the system ensures robust, secured communication and fast transmission, along with transmission power management for extended battery life.

► Powerful Expandability:

The M25 is designed to adapt and grow with your needs. Its seamless expansion, powered by PoE Ethernet, ensures hassle-free scalability. While fully wireless, the M25 also supports both wired and wireless expansions (for example, using ZX10M and PGM8M modules) and extended range with Ethernet repeaters. The complete system (available in the third quarter of 2025) will include video verification, access control, home automation, and more.

► Enhanced Personal Security:

With user roles such as Owner, Master, System User, Maintenance, and Guest, the Owner and Master retain complete control of the system. Other user roles can access the application for remote connections or access the system locally via remotes/keypads. Supporting up to 128 users with assignable JPEG images makes identification easier and important with the M Series access

control modules. The M25's 10 partitions and 75 wireless nodes make this compact system a piece of marvel and beauty. Installer access is monitored and requires preapproval from the Owner or the Service Company. Each service entry by the installer is indicated to the Owner and Master via push notification.

► Powerful Auto Arm/Disarm/PGM process:

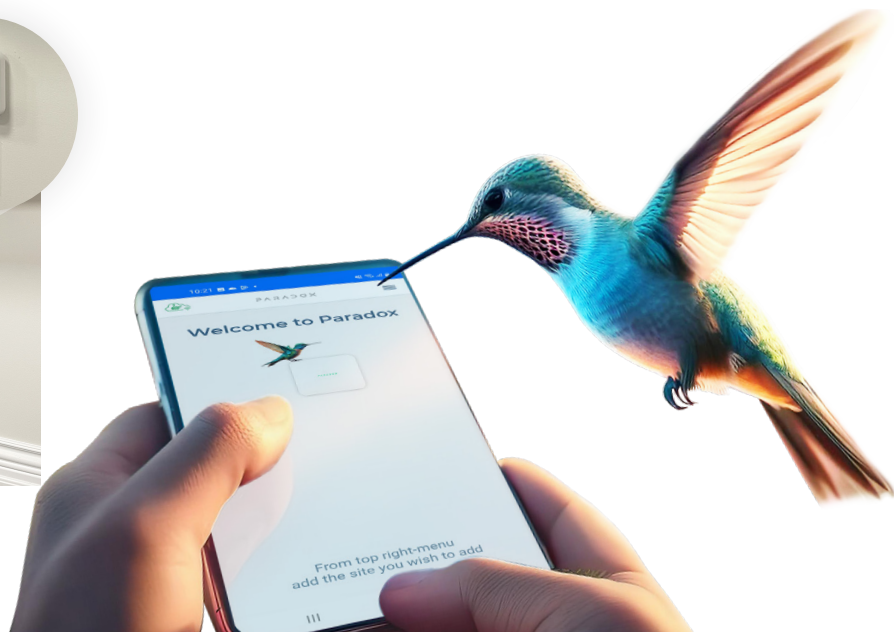
The system provides an auto-arm feature on a no movement (all zones closed) timer within a schedule, and supports auto disarm, Sleep to Stay, and Stay to Disarm. For instance, it can be easily scheduled to set Stay arming at 19:00, Sleep arming at midnight, Sleep to Stay arming at 5:00 a.m., and Full Disarm at 07:00 a.m. all week or on selected days. Within each arming schedule, you can customize the status of PGMs to set shutters or lights to suit your preferences.

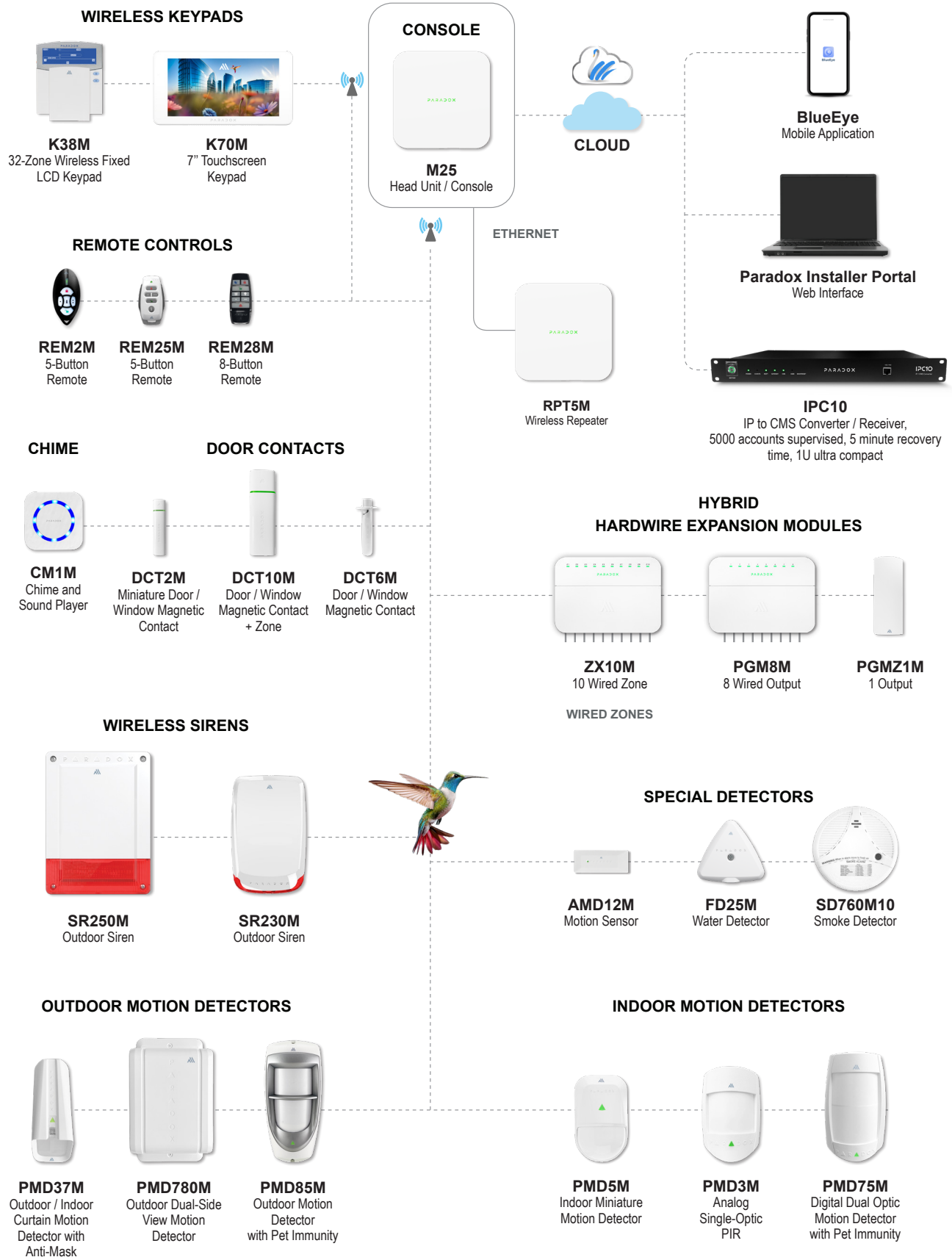
► Enhanced Temperature Monitoring and Control:

The M25 includes temperature monitoring with every wireless device, protecting valuables and sites from freezing or overheating by controlling PGMs, reporting to CMS, sending push notifications, and providing clear indications on the app's message center. For instance, in colder regions, a cold warning can be set at 80C, alerting users that heating is not functioning—protecting wine cellars from freezing or overheating, or enabling temperature monitoring in greenhouses to prevent frost or overheating damage. Heating and cooling PGMs can be easily configured.

► User-Friendly Mobile App Control:

Monitor and manage your security system from anywhere with the intuitive BlueEye mobile application. Always stay informed with instant notifications for any security breach or unusual activity.





Technical Specifications

Power Supply	PoE, 10W maximum
Battery	3.7V Lithium-ion battery, 5000 mA.
Battery Backup Time	26H on Ethernet, 24H on Wi-Fi, 20H on LTE
Ethernet / Wi-Fi	Built-in Wi-Fi - 2.4 GHz B/G/N
LTE	Built-in (LTE Model), main channel, or backup.
Users	128; one owner, masters, users, guests, and maintenance.
BlueEye Users access	Optional, enabled by owner or master per user
JPEGs for User and Partition	Yes, from the gallery or camera.
Partitions	10
Total Zones	100
Remotes	128 maximum per system, up to four per user
Wireless Devices	75 per system
Adding Devices	Via auto-learn feature (wireless and Ethernet), QR scan, or manual serial number input for pre-programming
Wireless Repeaters (via Ethernet)	Maximum of 4 per system.
Programmable Outputs	Up to 48 with wireless expanders; regular, restricted to selected users, or installer-only.
PGM Activation	Controlled by manual activation, schedule, system events, sunset/sunrise, or temperature reading.
PGM Status Verification	PGM status with zone verification and timer-based error display per PGM.
Ethernet Expansion Devices	Up to 45 repeaters, keypads, cameras, and access modules
Video Verification	Up to 16 cameras (available starting May 2025)
Access Control	Up to 16 doors (available starting July 2025)
Arming Options	Stay, Sleep, and Full Arm
Auto Arm	On schedule or no movement
Auto Disarm	On schedule, Sleep to stay, stay to disarm
Security Events	1000
Access Events	2000
Wireless Frequency Range	868 (865.05 - 867.95) MHz or 914 (902.25 - 927.55) MHz; certain countries may have limited or different frequencies.
Modulation Type	GFSK with frequency and encryption hopping.
Wireless Transmission power	868 MHz band (+14 dBm), 914 MHz band (+22 dBm), coin battery devices limited to +14 dBm.
Installation	By registered installer with Paradox Company ID (PCI) from BlueEye or Service Company Portal.
Service Company Access	Permanent access or as granted by System Owner.
Service Company Lock	Available. Enables automatically when the Service Company subscribes to the Swan service.
Service Company Portal	Available for all registered Service Companies/Installers with Paradox Company ID (PCI).
Temperature Display and Control	Site and areas temperature display, temperature activation for PGM (cool or heat), custom alerts via push notification and BlueEye message center display.
Cloud Services	Paradox Swan 4G (subscription required)
Reporting	Up to four receivers, two channels with backup. Up to three transmission channels: Ethernet, Wi-Fi, and LTE.
Programming	Via BlueEye application or PC software
Operating Temperature	-25°C to +55°C (-13°F to 131°F)
Certifications	CE, EN 50131-3, EN 50131-6, EN 50136-1, EN 50136-2, EN 50131-5-3, FCC 15.247, Grade 2, Class II.
Dimensions	12.4W x 12.4H x 3.55D cm (4.89W x 4.89H x 1.4D in.)
Weight	0.26 Kg

